



**INDIANA UNIVERSITY**  
CAPITAL PROJECTS

## Addendum #1

---

Project: IN075A Lohse & Thornbrough Houses - Riverwalk Apts HVAC  
Replacements  
IU 20250211  
Date: June 9, 2025

---

This Addendum, issued prior to bidding, alters, amends, corrects, or clarifies the Construction Bid Documents to the extent stated herein and does thereby become a part of the Construction Bid Documents, and will become part of the Contract Documents of the successful bidder. Acknowledge receipt of this Addendum in the space provided on the Bid Form. Failure to do so may subject the Bidder to disqualification.

---

### ITEMS INCLUDED IN THIS ADDENDUM

#### Item 1 - Attachments

- Pre-bid meeting attendance and project scope clarifications – 1 Page
- IUPUI Student Housing (Project #20005182) construction documents – 10 Pages

End of Addendum No. 1

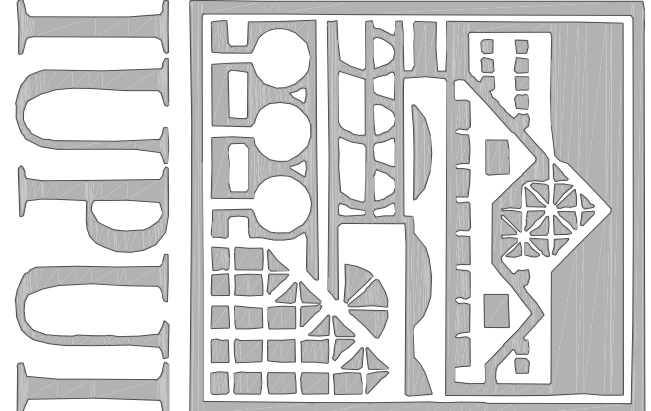
20250211 - IN075A Lohse & Thornbrough Houses - Riverwalk Apts HVAC  
Replacements

Pre-bid meeting attendance:

<u>Name</u>	<u>Company</u>	<u>email</u>
Ken McKnight	IU	<a href="mailto:kmcnkigh@iu.edu">kmcnkigh@iu.edu</a>
Mike Perry	IU	<a href="mailto:perrymike@iu.edu">perrymike@iu.edu</a>
David Knapp	IU	<a href="mailto:drknapp@iu.edu">drknapp@iu.edu</a>
Jeremey Boner	Irish Mech	<a href="mailto:jboner@irishmechanicalservices.com">jboner@irishmechanicalservices.com</a>
Zack Elliot	Heat DR.	<a href="mailto:heatdrheatingair@gmail.com">heatdrheatingair@gmail.com</a>
T.J. Maloney	Heat DR.	<a href="mailto:heatdrheatingair@gmail.com">heatdrheatingair@gmail.com</a>
Nick Proffitt	DEEM	<a href="mailto:nproffitt@DEEMFIRST.com">nproffitt@DEEMFIRST.com</a>
Aaron Johnson	HFI	<a href="mailto:ajohnson@harrell-fish.com">ajohnson@harrell-fish.com</a>
Donovan Hibben	HFI	<a href="mailto:dhibben@harrell-fish.com">dhibben@harrell-fish.com</a>

Scope clarifications:

1. IU to remove and retain existing refrigerant in each existing air condition system prior to Mechanical Contractor demolition of interior and exterior unit.
2. Only brazed/solder joints allowed existing or new refrigerant line installation.
3. Mechanical Contractor to provide interior PVC condensate trap sized per manufacturer.
4. Mechanical Contractor to provide suction line traps where required by manufacturer.
5. Mechanical Contractor to provide pad for rooftop mounting of heat pumps on roof like DIVERSITECH Model EP3030-3, square mounting pad, 30 in Lg, 30 in Wd, 3 in height, Polypropylene.
6. Mechanical Contractor to coordinate with Siemens once units are installed for control wiring installation to units. Mechanical Contractor to fully commission system operation after Siemens has completed controls installation.
7. Mechanical Contractor to remove existing wall mounted thermostat.
8. See existing construction documents attached in this addendum dated 11/1/2002 for reference only.



INDIANA UNIVERSITY  
PURDUE UNIVERSITY  
INDIANAPOLIS CAMPUS

STUDENT HOUSING  
IU# 20005182

Development Consultant:

CAPSTONE DEVELOPMENT CORP.,  
331 OHNE PARK DRIVE  
BLOOMINGTON, IN 47404-3223  
(205) 414-6400

Architect / Landscape Architect:

RATIO ARCHITECTS, INC.,  
Suite 100, Schneider Building  
Indianapolis, IN 46204 (317) 633-0400

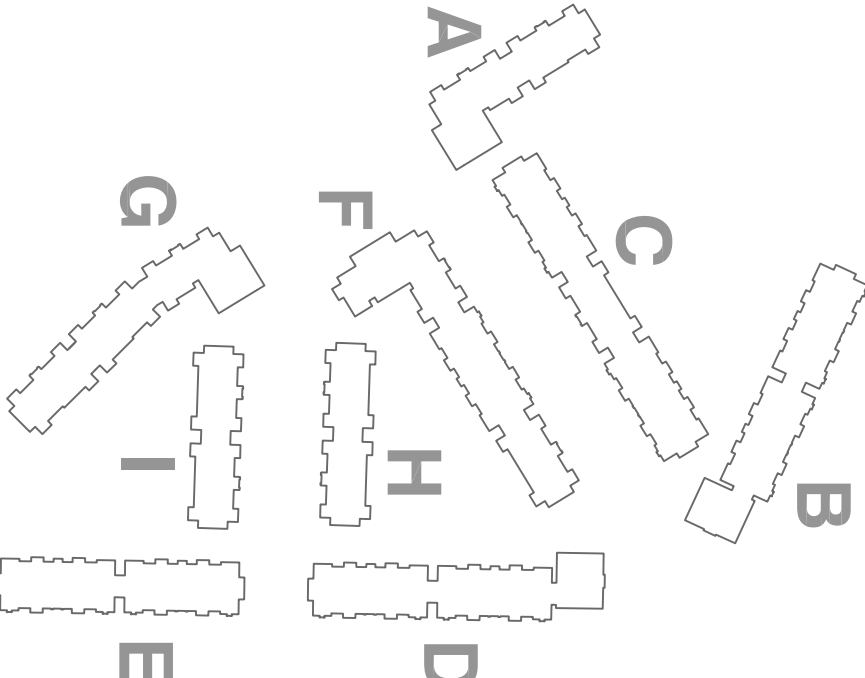
Structural / Civil Engineer:

Fink Roberts & Petrie, Inc.,  
3307 West 90th Street  
Indianapolis, IN 46268  
(317) 592-6400

Mechanical / Electrical / Plumbing / Fire Protection

CRS ENGINEERING, INC.

3800 North Meridian Street  
Bloomington, IN 47404-3222  
(205) 323-2373



CONSTRUCTION  
SET

BUILDING PACKAGE

DRAWN BY

NH

CHECKED BY

CS

APPROVED BY

RSE



OPENING NOTE: THIS ARCHITECTURAL AND  
ENGINEERING DRAWING IS FOR INFORMATION AND  
REFERENCE ONLY. IT IS NOT TO BE USED FOR  
CONSTRUCTION OR FOR ANY OTHER PURPOSE.  
NO GUARANTEE OR WARRANTY IS MADE BY  
RATIO ARCHITECTS, INC. OR CRS ENGINEERING, INC.  
OTHER THAN THAT THEY HAVE PREPARED THE  
DRAWING.

ARCHITECTS

REVISIONS

1	1	1
2	2	2
3	3	3
4	4	4
5	5	5
6	6	6
7	7	7

SHEET TITLE

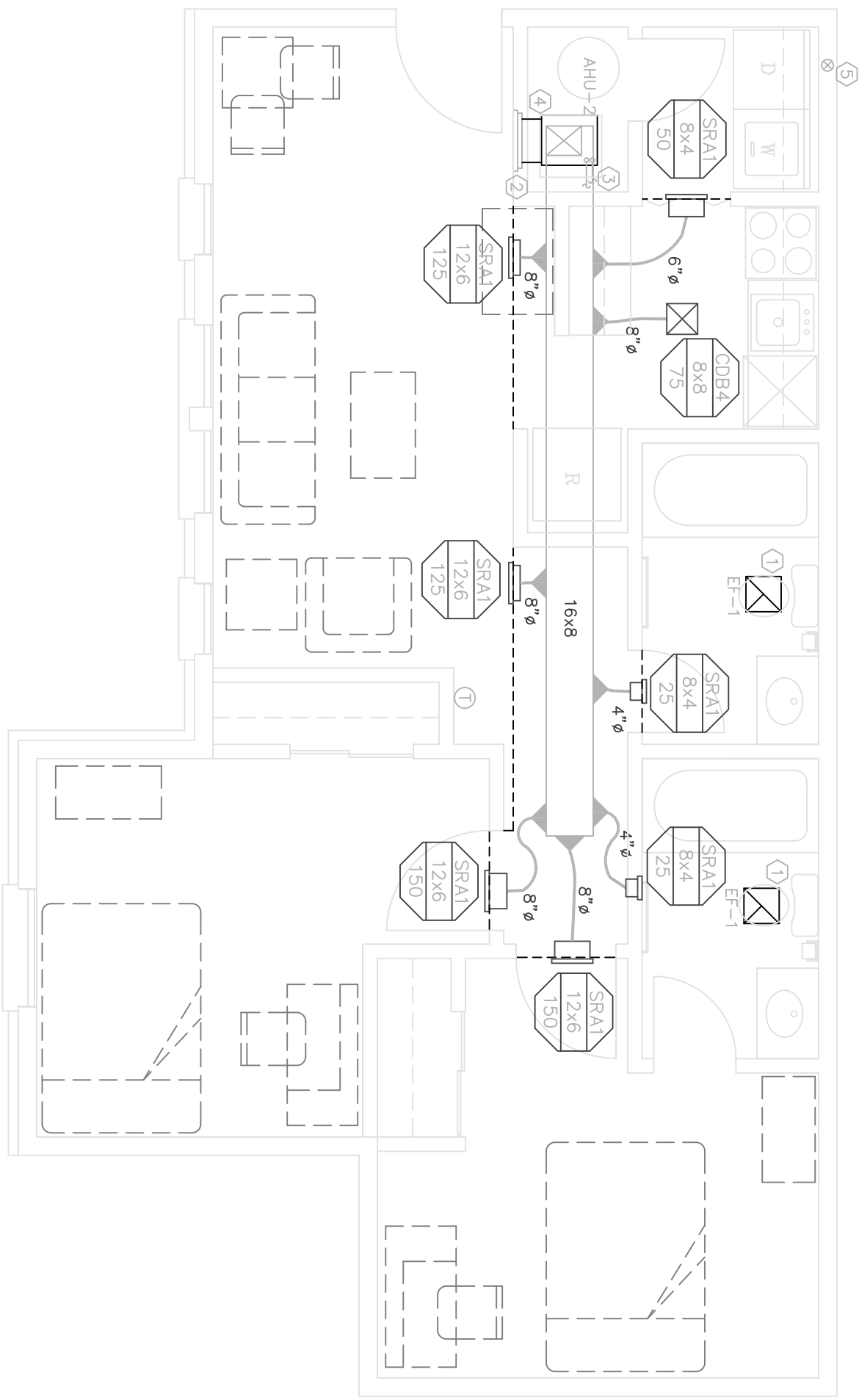
U2, U2C, U4, AND U4C  
UNIT PLANS

PROJECT NO. SHEET NUMBER

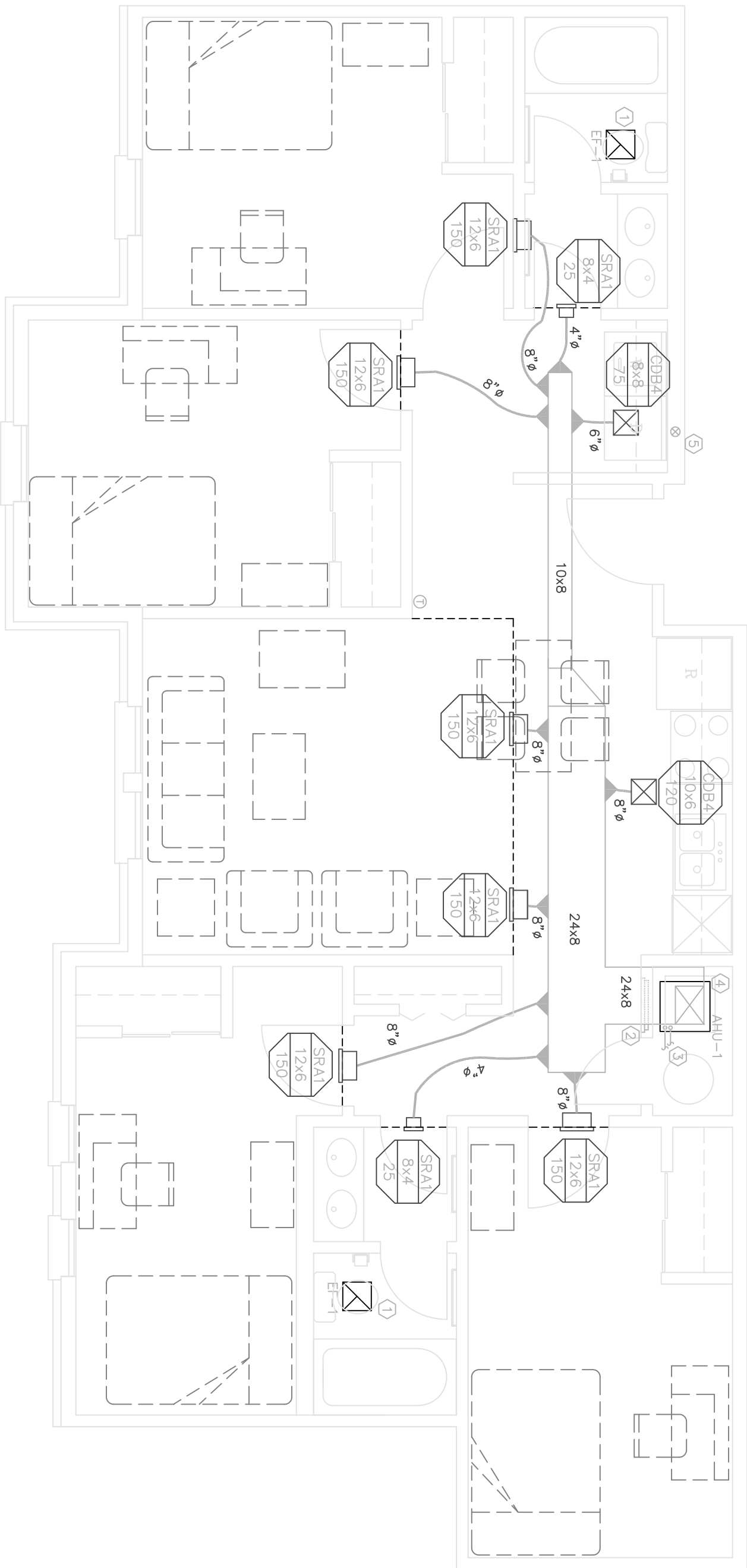
00001000

DATE M-201

11/1/2002

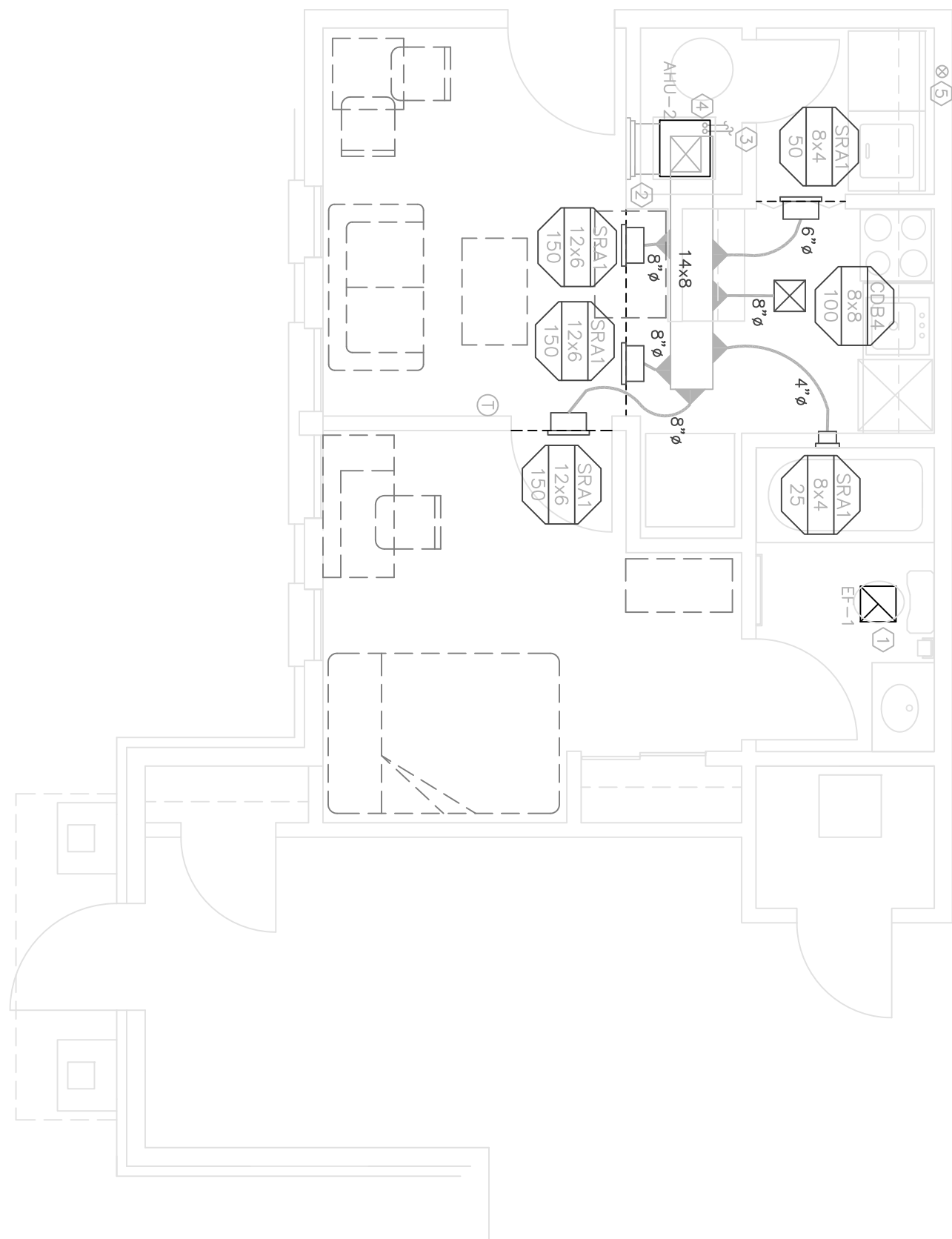


U2 - TWO BEDROOM UNIT  
MECHANICAL  
0 1 2 3 4 8  
SCALE: 1/4" = 1'-0"

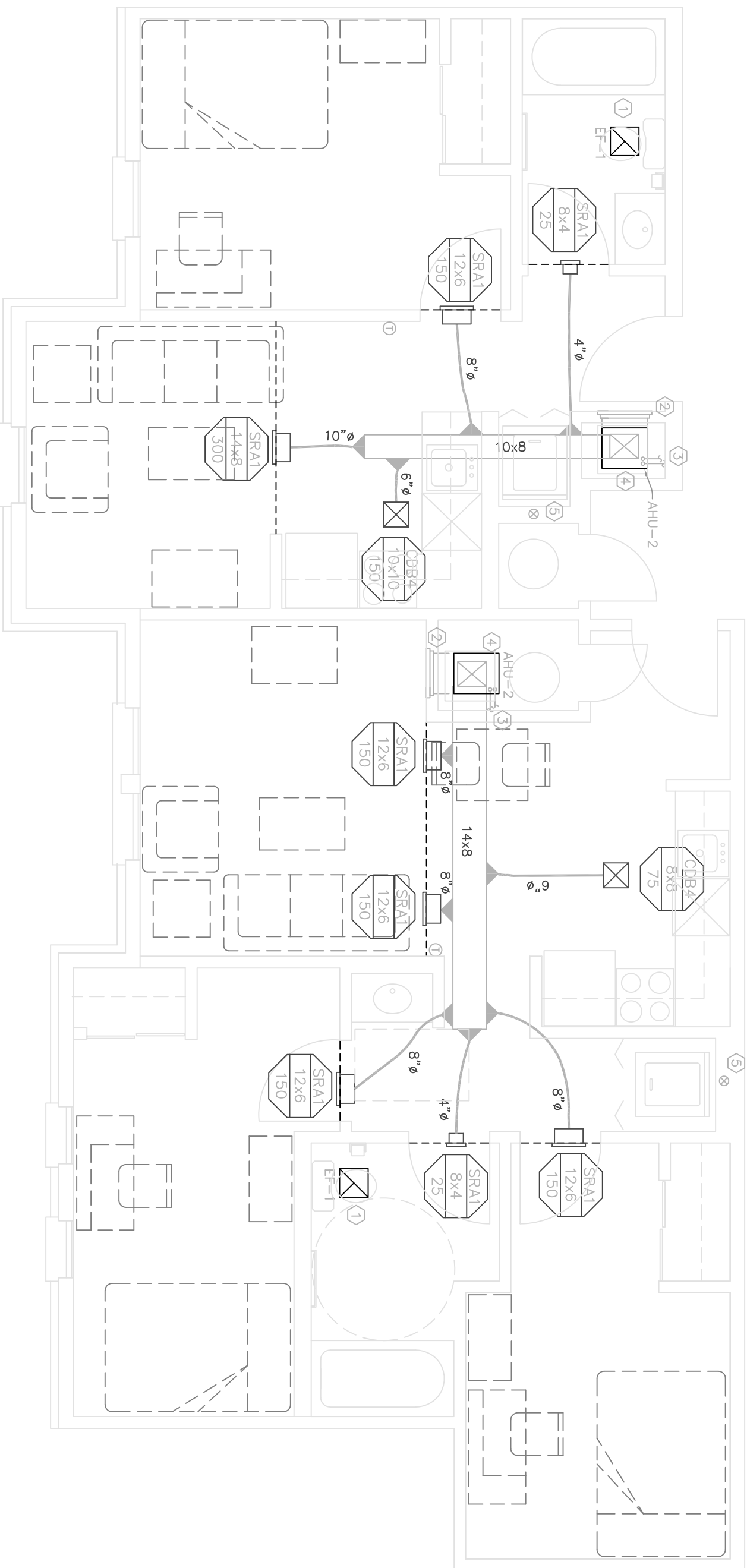


U4 - FOUR BEDROOM UNIT  
MECHANICAL  
0 1 2 3 4 8  
SCALE: 1/4" = 1'-0"

- DRAWING NOTES:
- 1) MOUNT 6"-1" IN CEILING, INTERLOCK WITH LIGHT SWITCH. SEE 1/8" SCALE PLANS FOR EXHAUST FLOOR ROOFING.
  - 2) RETURN GRILLE INTERLOCK WITH WALL MOUNT AND ACCESS PANEL.
  - 3) ROUTE REFRIGERANT LINES FROM AHU TO OUTDOOR CONDENSING UNIT. SEE 1/8" SCALE PLANS FOR REFRIGERANT LINE ROUTING AND CONDENSING UNIT LOCATION.
  - 4) COORDINATE WITH PLUMBING CONTRACTOR FOR DRAIN IN MECHANICAL ROOM.
  - 5) PROVIDE 4" DIAMETER 26 GAGE GALVANIZED METAL GREY VENT REFER TO EXTENDED VENT LENGTH CAPACITY DRIVERS.

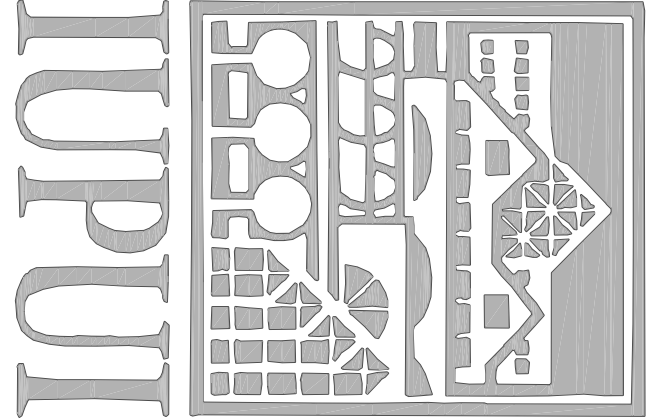


U2C - TWO BEDROOM CONVERSION UNIT  
MECHANICAL  
0 1 2 3 4 8  
SCALE: 1/4" = 1'-0"



U4C - FOUR BEDROOM CONVERSION UNIT  
MECHANICAL  
0 1 2 3 4 8  
SCALE: 1/4" = 1'-0"

- GENERAL NOTES:
- 1) SPACE ABOVE CEILING IS LIMITED. CAREFULLY COORDINATION WITH ARCHITECT AND STRUCTURAL ENGINEER IS REQUIRED TO AVOID OBSTRUCTIONS. WORK IS CRITICAL TO DUCTWORK INSTALLATION.
  - 2) COORDINATE AIR DEVICE LOCATIONS WITH ARCHITECTS.
  - 3) PROVIDE NECESSARY OFFSETS IN PIPING, ELECTRICAL CONDUIT, AND DUCTWORK SHALL BE RUN TIGHT TO STRUCTURE, AVOID CROSSING OVER LIGHTS AND OTHER DUCTS DUE TO TIGHT CLEARANCES.
  - 4) MOUNT THERMOSTATS 4'-0" ABOVE FINISHED FLOOR UNLESS NOTED OTHERWISE. COORDINATE EXACT LOCATION WITH ARCHITECT.
  - 5) DRAWINGS ARE DIAGNOSTIC AND DO NOT SHOW ALL DETAILS OR INSTALLATION. COORDINATE WITH PLUMBING CONTRACTOR FOR DRAIN IN MECHANICAL ROOM.
  - 6) UNDERCUT ALL BEDROOM DOORS 3/4".



INDIANA UNIVERSITY  
PURDUE UNIVERSITY  
INDIANAPOLIS CAMPUS

STUDENT HOUSING  
IU# 20005182

Development Consultant:

CAPSTONE DEVELOPMENT CORP.  
531 OHMS PARK DRIVE  
BLOOMINGTON, IN 47404-3223  
(205) 414-4500

Architect / Landscape Architect:

RATIO ARCHITECTS, INC.  
Suite 100, Schaefer Building  
1000 N. Meridian Street  
Indianapolis, IN 46204 (317) 633-4040

Structural / Civil Engineer:

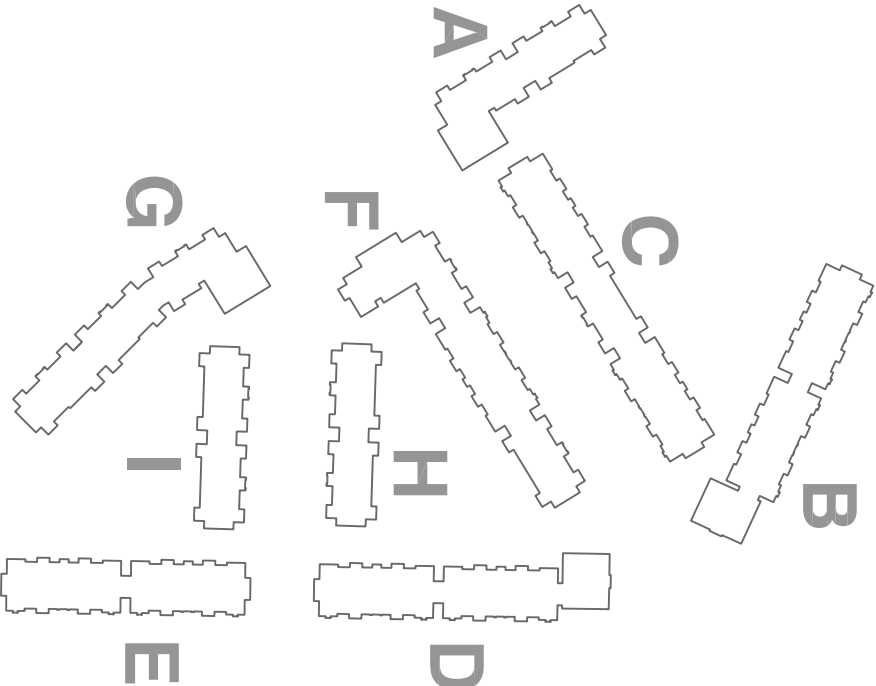
Fink Roberts & Petrie, Inc.  
3307 West 90th Street  
Indianapolis, IN 46268  
(317) 592-4540

Mechanical / Electrical / Plumbing / Fire Protection

CRS ENGINEERING, INC.

Bloomington, Indiana 47404-3222

(205) 322-2373



## CONSTRUCTION SET

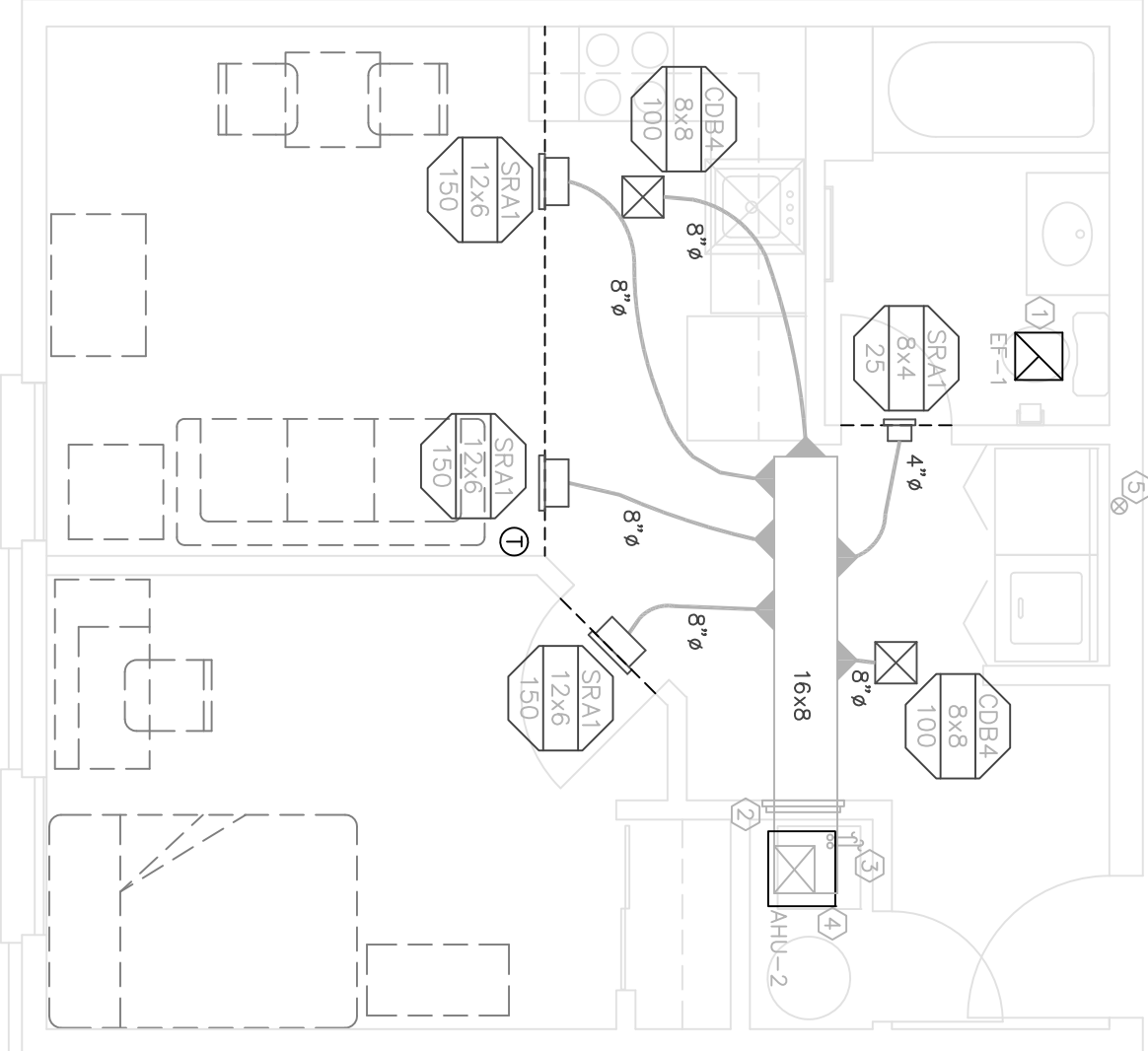
### BUILDING PACKAGE

DRAWN BY	NH
CHECKED BY	CS
APPROVED BY	RSB
REVISIONS	
ARCHITECTS	
REVISIONS	
SHEET TITLE	
U1, UIADA, AND U2C-F UNIT PLANS	

**RATIO**  
ARCHITECTS  
3601 N. W. 8th Street, Suite 200  
Bloomington, IN 47404  
Phone: (317) 322-2373  
Fax: (317) 322-2374  
www.crs-engineers.com

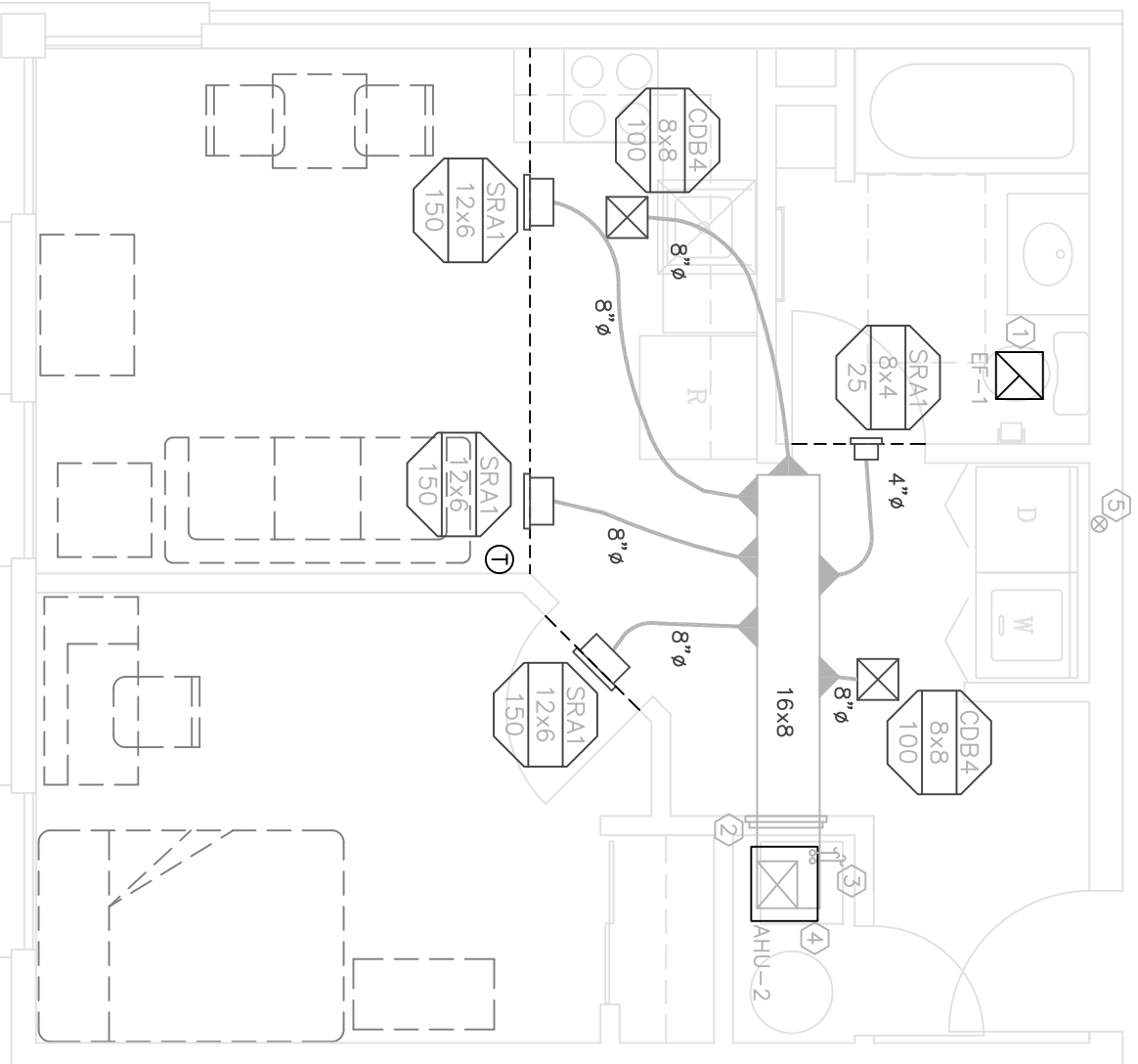
CRS ENGINEERING, INC.  
3601 N. W. 8th Street, Suite 200  
Bloomington, IN 47404  
Phone: (317) 322-2373  
Fax: (317) 322-2374  
www.crs-engineers.com

PROJECT NO.	SHEET NUMBER
01001000	M-202
DATE	11/1/2002



U1 - ONE BEDROOM UNIT

BASE SHEET  
0 1 2 3 4 8  
SCALE 1/4" = 1'-0"

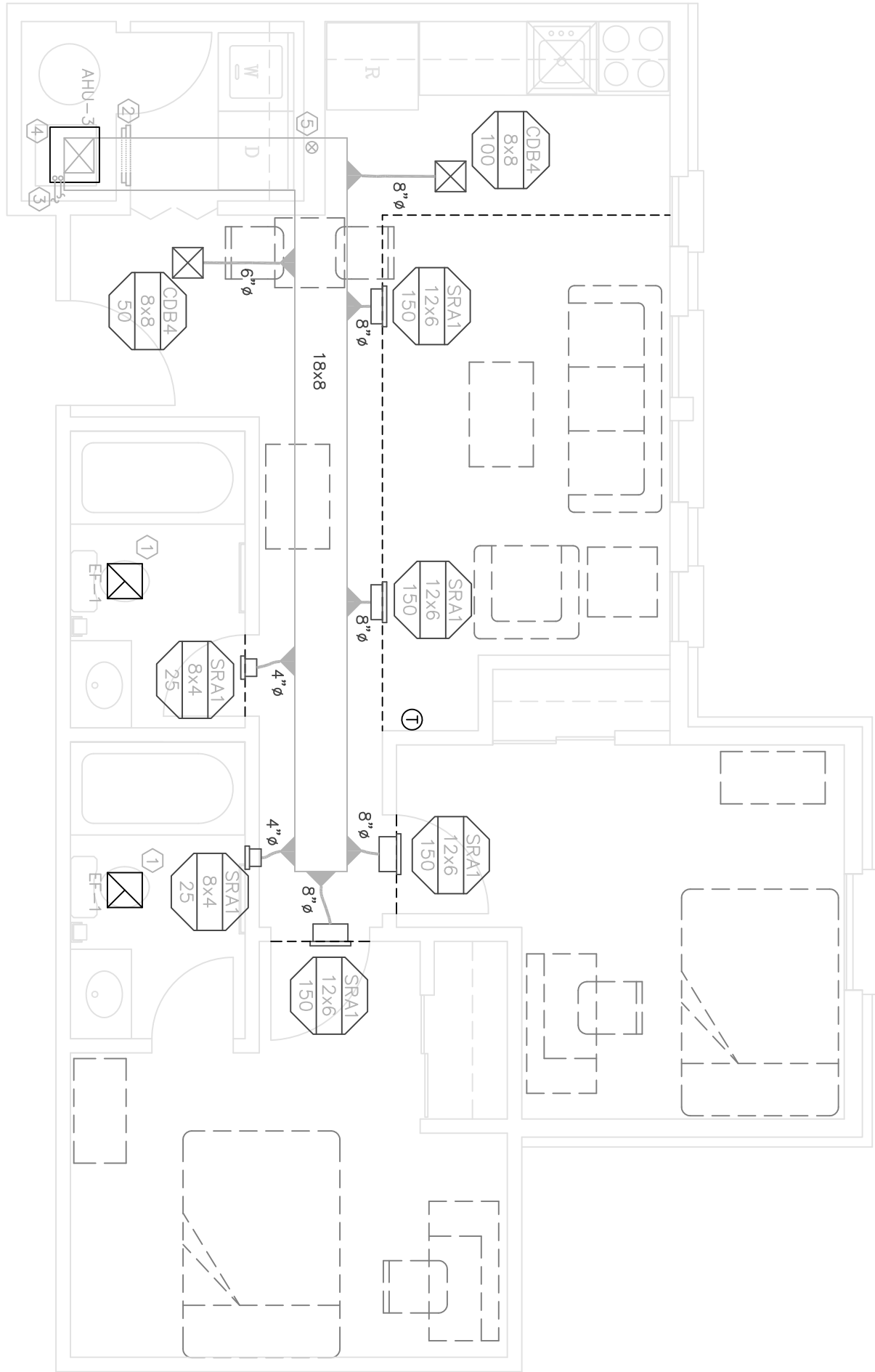


UIADA - ONE BEDROOM ACCESSIBLE UNIT

BASE SHEET  
0 1 2 3 4 8  
SCALE 1/4" = 1'-0"

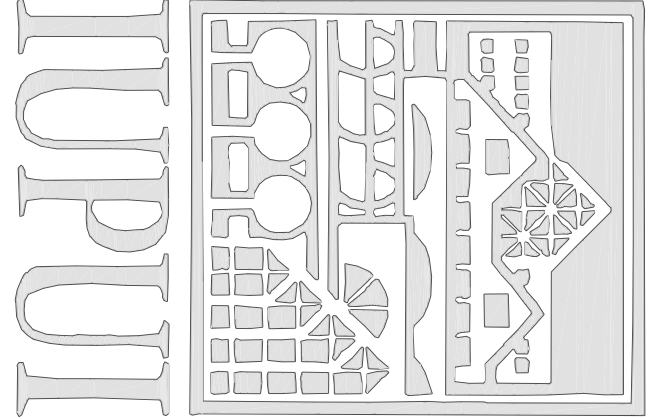
- DRAWING NOTES:
- ① MOUNT EF-1 IN CEILING INTERLOCK WITH LIGHT SWITCH. SEE 1/8" SCALE PLANS FOR EXHAUST DUCT ROUTING.
  - ② RETURN GRILLE INTERNAL WITH WALL MOUNT AND ACCESS PANEL.
  - ③ ROUTE REFRIGERANT LINES FROM AHU TO OUTDOOR CONDENSING UNIT. SEE 1/8" SCALE PLANS FOR REFRIGERANT LINE ROUTING AND CONDENSING UNIT LOCATION.
  - ④ ROUTE 3/4" CONDENSATE DRAIN FROM AHU TO FLOOR DRAIN IN MECHANICAL ROOM. PROVIDE 1/2" SLOPE TO DRAIN.
  - ⑤ MOUNT THERMOSTATS 4'-0" ABOVE FINISHED FLOOR UNLESS NOTED OTHERWISE. COORDINATE EXACT LOCATION WITH ARCHITECT.
  - ⑥ DRAWINGS ARE DIAGNOSTIC AND DO NOT SHOW ALL DETAILS OR INSTALLATION. MECHANICAL ESTIMATION NECESSARY FOR COMPLETE INSTALLATION.
  - ⑦ UNDERCUT ALL BEDROOM DOORS 3/4".

- GENERAL NOTES:
- ① SPACE ABOVE CEILING IS LIMITED. CAREFUL COORDINATION WITH ARCHITECT AND MECHANICAL CONTRACTOR IS REQUIRED. MECHANICAL WORK IS CRITICAL TO DUCTWORK INSTALLATION.
  - ② COORDINATE AIR DEVICE LOCATIONS WITH ARCHITECTS.
  - ③ PROVIDE NECESSARY OFFSETS IN PIPING, ELECTRICAL CONDUIT, AND DUCTWORK. EXCEED MINIMUM CLEARANCES TO PREVENT COLLISIONS.
  - ④ DUCTWORK SHALL BE RUN TIGHT TO STRUCTURE. AVOID CROSSING OVER LIGHTS AND OTHER DUCTS DUE TO TIGHT CLEARANCES.
  - ⑤ MOUNT THERMOSTATS 4'-0" ABOVE FINISHED FLOOR UNLESS NOTED OTHERWISE. COORDINATE EXACT LOCATION WITH ARCHITECT.
  - ⑥ DRAWINGS ARE DIAGNOSTIC AND DO NOT SHOW ALL DETAILS OR INSTALLATION. MECHANICAL ESTIMATION NECESSARY FOR COMPLETE INSTALLATION.
  - ⑦ UNDERCUT ALL BEDROOM DOORS 3/4".



U2C-F - TWO BEDROOM CONVERSION UNIT TYPE 'F'

BASE SHEET  
0 1 2 3 4 8  
SCALE 1/4" = 1'-0"



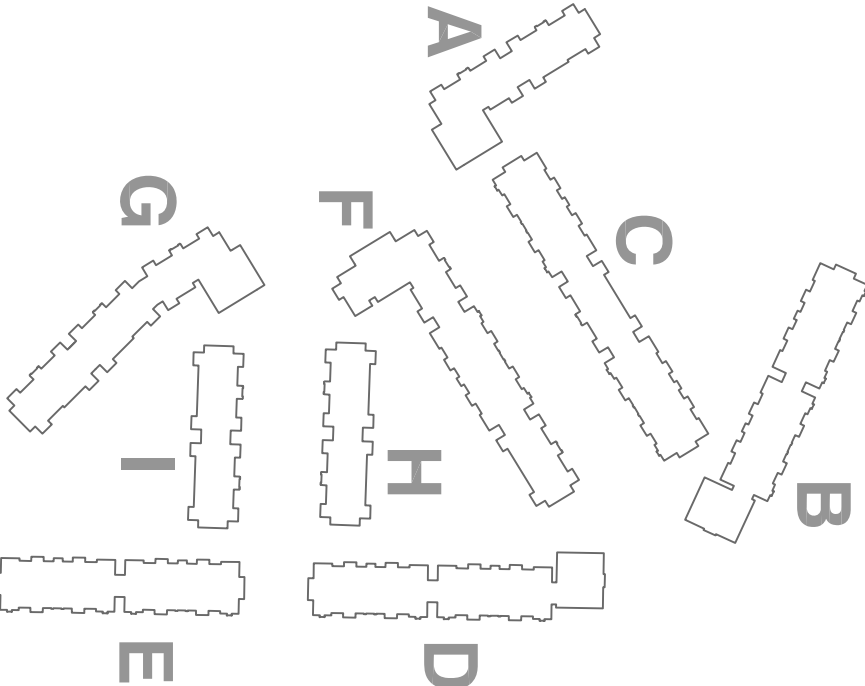
INDIANA UNIVERSITY  
PURDUE UNIVERSITY  
INDIANAPOLIS CAMPUS  
STUDENT HOUSING  
IU# 20005182

Development Consultant:  
CAPSTONE DEVELOPMENT CORP.  
331 OHMS Park Drive  
Bloomington, IN 47404-3222  
(203) 414-6400

Architect / Landscape Architect:  
RATIO ARCHITECTS, INC.  
Suite 100, Schneider Building  
Indianapolis, IN 46204 (317) 633-4040

Structural / Civil Engineer:  
Fink Roberts & Petrie, Inc.  
3307 West 50th Street  
Indianapolis, IN 46268  
(317) 574-2400

Mechanical / Electrical / Plumbing / Fire Protection  
CRS ENGINEERING, INC.  
3046 17th Ave. S., Suite 100  
Birmingham, AL 35205  
(205) 322-2373



CONSTRUCTION  
SET  
BUILDING PACKAGE

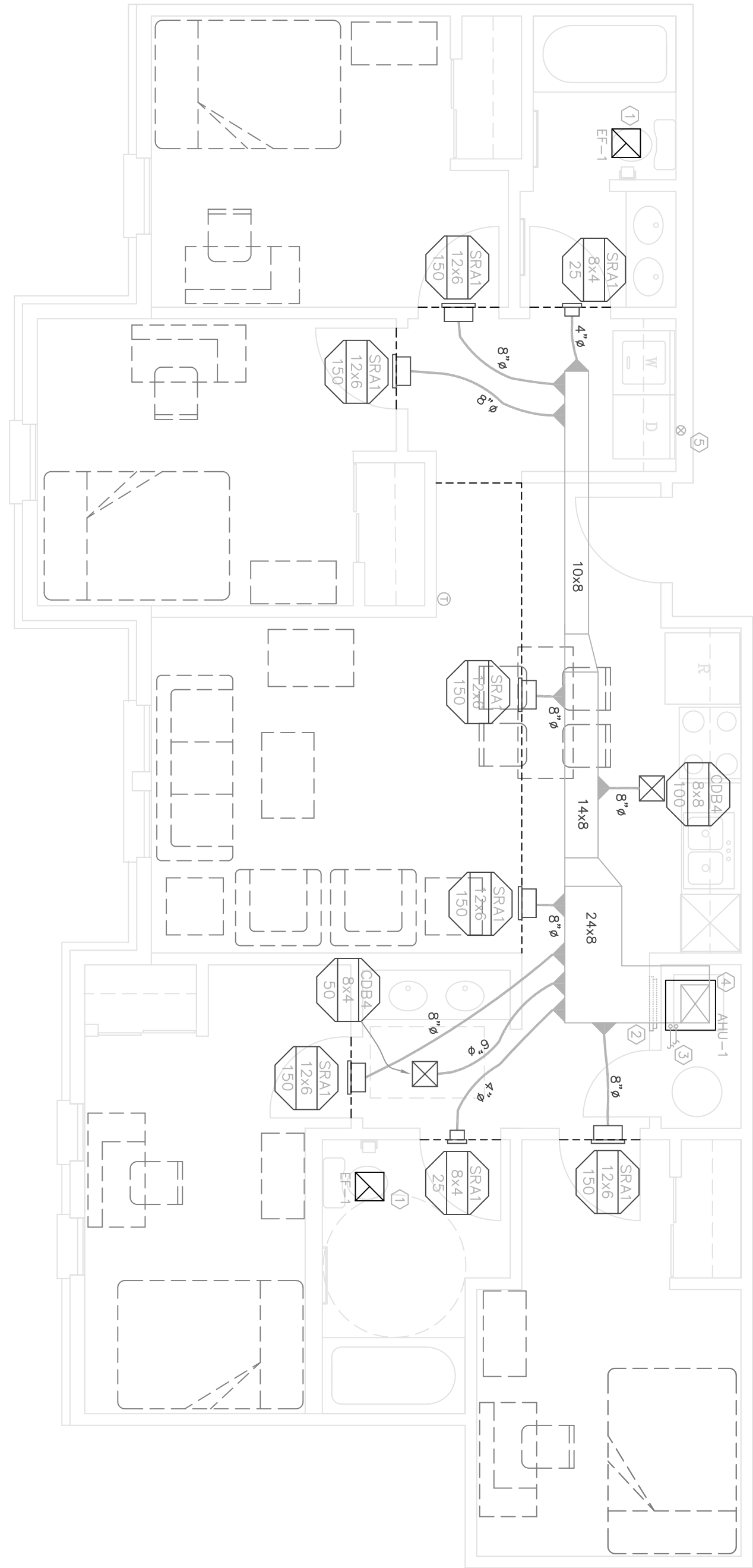
DRAWN BY	NH
CHECKED BY	CS
APPROVED BY	RSB

**RATIO**  
ARCHITECTS  
GRAPHIC NOTE: THE ARCHITECTURAL AND ENGINEERING DRAWING IS FOR INFORMATION AND NOT FOR CONSTRUCTION. NO PART OF THIS DOCUMENT OR INFORMATION CONTAINED HEREIN MAY BE REPRODUCED OR TRANSMITTED IN ANY FORM OR BY ANY MEANS, ELECTRONIC OR MECHANICAL, WITHOUT PERMISSION IN WRITING FROM RATIO ARCHITECTS, INC. OTHERWISE, THE USER ASSUMES ALL LIABILITY.

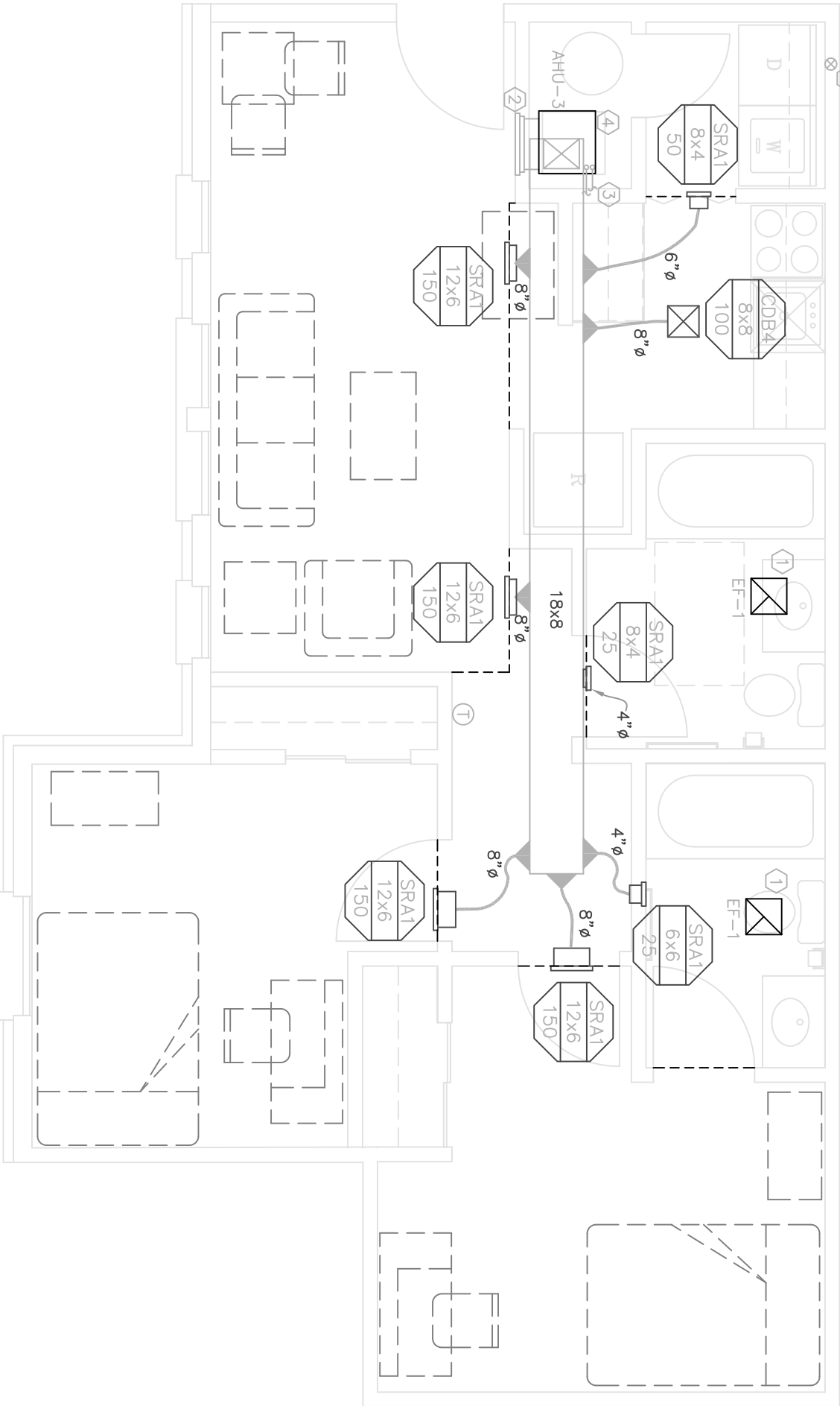
REVISIONS	
1	△
2	△
3	△
4	△
5	△
6	△
7	△

SHEET TITLE  
U2ADA, U4ADA, AND U2b  
UNIT PLANS

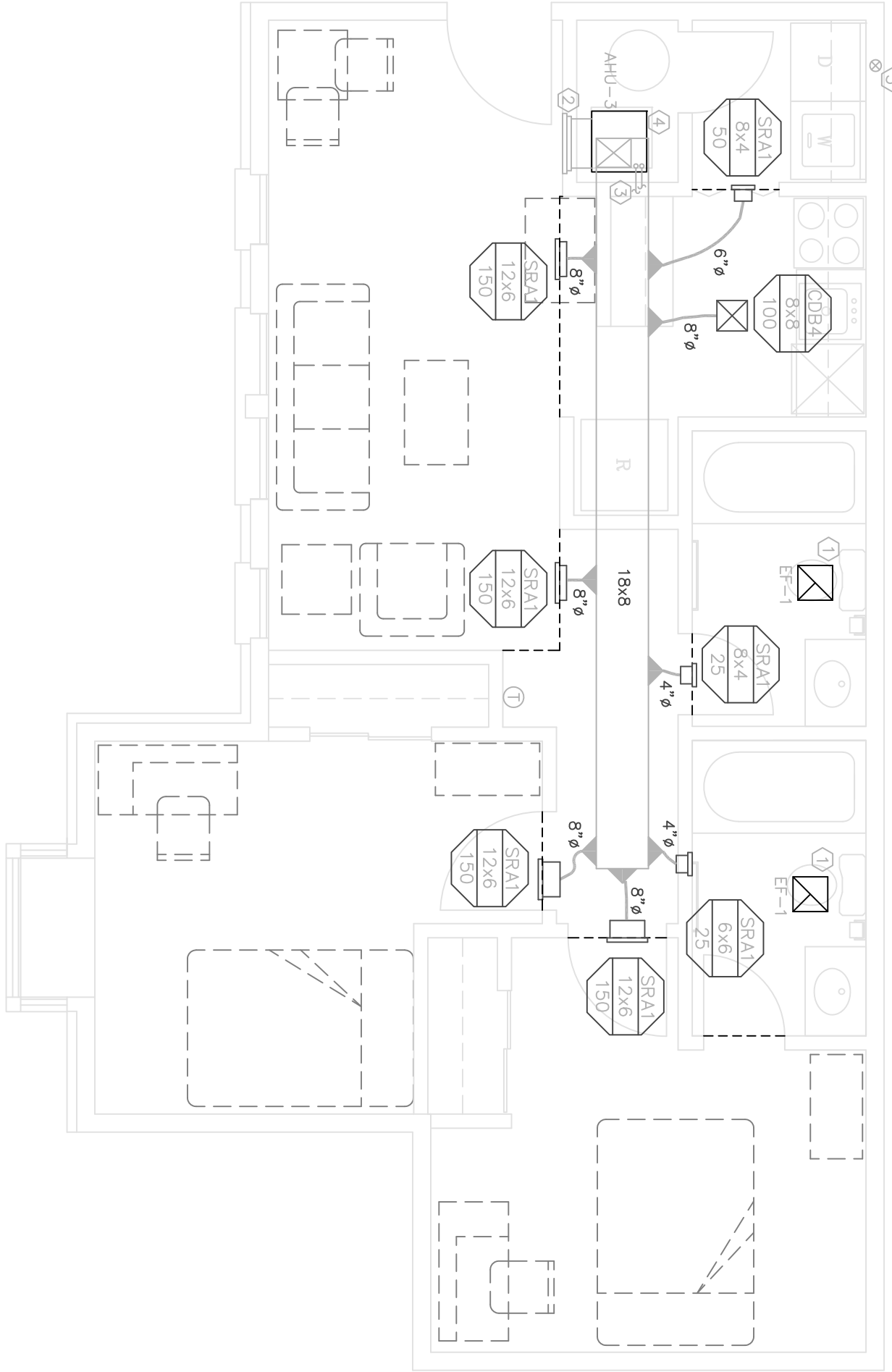
PROJECT NO.	SHEET NUMBER
070031000	M-203
DATE	11/1/2022



U4ADA – FOUR BEDROOM ACCESSIBLE UNIT  
MECHANICAL  
0 1 2 3 4  
8  
SCALE: 1/4" = 1'-0"



U2ADA – TWO BEDROOM ACCESSIBLE UNIT  
MECHANICAL  
0 1 2 3 4  
8  
SCALE: 1/4" = 1'-0"



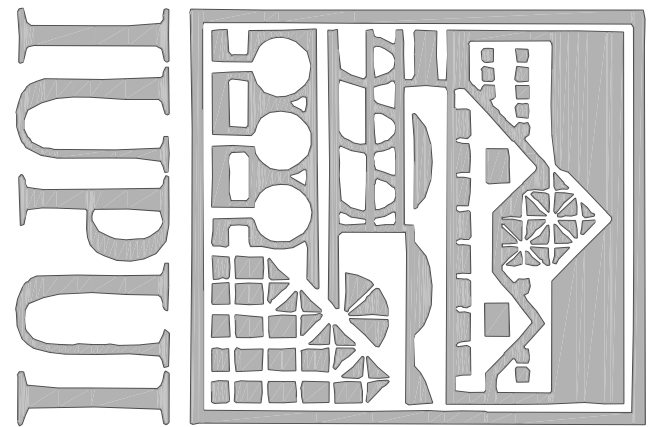
U2b  
MECHANICAL  
0 1 2 3 4  
8  
SCALE: 1/4" = 1'-0"

- GENERAL NOTES:
1. MOUNT FF-1 IN CEILING, INTERLOCK WITH LIGHT SWITCH. SEE 1/8" SCALE PLANS FOR EXHAUST DUCT ROUTING.
  2. RETURN GRILLE INTERLOCK WITH WALL MOUNT AHU ACCESS PANEL.
  3. ROUTE REFRIGERANT LINES FROM AHU TO OUTDOOR CONDENSING UNIT. SEE 1/8" SCALE PLANS FOR REFRIGERANT LINE ROUTING AND CONDENSING UNIT LOCATION.
  4. ROUTE 3/8" CONDENSATE DRAIN FROM AHU TO ROOM DRAIN IN MECHANICAL ROOM. SEE 1/8" SCALE PLANS FOR CONDENSATE DRAIN ROUTING AND TERMINATION. DRAIN TO BE EXTENDED VENT LENGTH CAPACITY DRIVERS.
  5. PROVIDE 4" DIAMETER 28 GAGE GALVANIZED METAL DRAIN PIPES. ENTER TO EXTENDED VENT LENGTH CAPACITY DRIVERS.

- GENERAL NOTES:
1. SPACE ABOVE CEILING IS LIMITED. CAREFUL COORDINATION WITH MECHANICAL, ELECTRICAL, AND ARCHITECTURAL WORK IS CRITICAL TO OUTWORK INSTALLATION.
  2. COORDINATE AIR DEVICE LOCATIONS WITH ARCHITECTS' REFLECTED CEILING PLAN.
  3. PROVIDE NECESSARY OFFSETS IN PIPING, ELECTRICAL CONDUIT, AND SHALL ALLOW FOR ANY CONFLICTS ENCOUNTERED.
  4. DUCTWORK SHALL BE RUN TIGHT TO STRUCTURE. AVOID CROSSING OVER LIGHTS AND OTHER DUCTS DUE TO TIGHT CLEARANCES.
  5. MOUNT THERMOSTATS 4'-0" ABOVE FINISHED FLOOR UNLESS NOTED OTHERWISE. COORDINATE EXACT LOCATION WITH ARCHITECT.
  6. DRAWINGS ARE DISCREPANT AND DO NOT SHOW ALL DETAILS OR INSTALLATION.
  7. UNDERCUT ALL BEDROOM DOORS 3/4".







INDIANA UNIVERSITY  
PURDUE UNIVERSITY  
INDIANAPOLIS CAMPUS

STUDENT HOUSING  
IU# 20005182

Development Consultant:

CAPSTONE DEVELOPMENT CORP.  
531 OHMS PARK DRIVE  
INDIANAPOLIS, IN 46223  
(203) 414-8400

Architect / Landscape Architect:

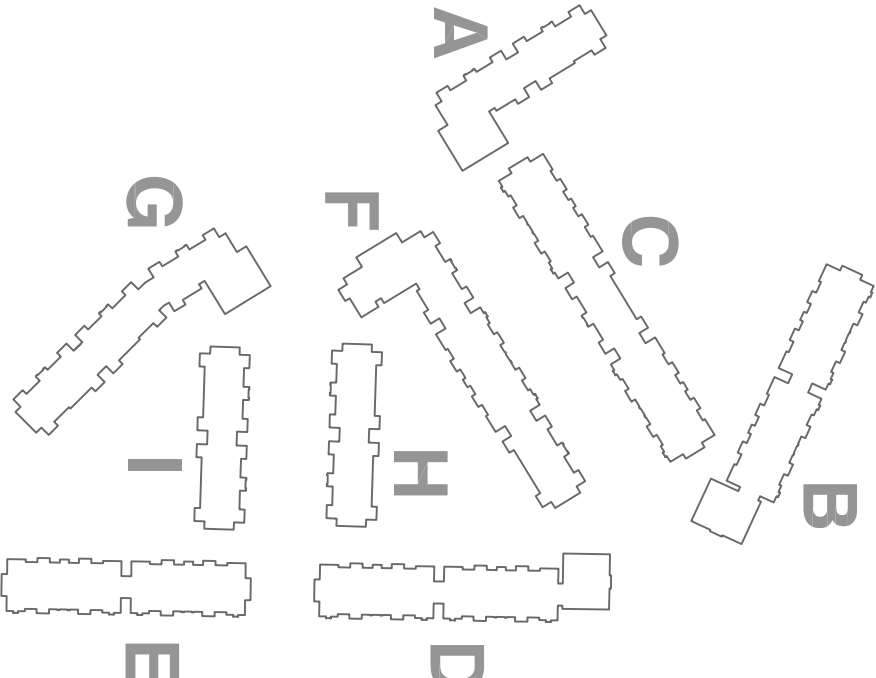
RATIO ARCHITECTS, INC.  
Suite 100, Schneider Building  
Indianapolis, IN 46204 (317) 633-4040

Structural / CMR Engineer:

Fink Roberts & Petrie, Inc.  
3307 West 90th Street  
Indianapolis, IN 46258  
(317) 572-4500

Mechanical / Electrical / Plumbing / Fire Protection

CRS ENGINEERING, INC.  
10000 N. Meridian Avenue, Suite 3222  
Indianapolis, IN 46222  
(203) 323-2373



CONSTRUCTION  
SET

BUILDING PACKAGE

DRAWN BY

NH

CHECKED BY

CS

APPROVED BY

RSB



CRS ENGINEERING, INC. HAS REVIEWED AND  
CONFIRMS THE BUILDING PACKAGE IS  
CONSISTENT WITH THE BUILDING PACKAGE  
DESCRIPTION AND SPECIFICATIONS. NO  
REVISIONS ARE REQUIRED. THIS REVIEW  
DOES NOT CONSTITUTE A GUARANTEE  
OR WARRANTY OF ANY KIND.

REVISIONS

△	△
△	△
△	△
△	△
△	△

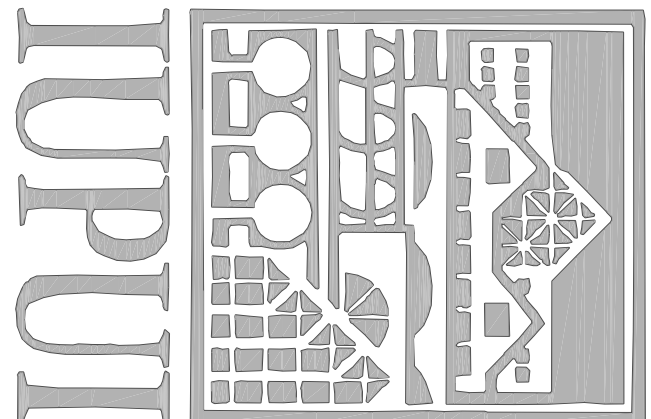
SHEET TITLE  
THIRD FLOOR PLAN,  
FOURTH FLOOR PLAN  
BUILDING "A"

PROJECT NO.

SHEET NUMBER

DATE

M-502A



INDIANA UNIVERSITY  
PURDUE UNIVERSITY  
INDIANAPOLIS CAMPUS

STUDENT HOUSING  
IU# 20005182

Development Consultant:

CAPSTONE DEVELOPMENT CORP.  
531 OHMS PARK DRIVE  
INDIANAPOLIS, IN 46223  
(206) 414-6400

Architect / Landscape Architect:

RATTO ARCHITECTS, INC.  
Suite 100, Schrader Building  
1000 N. Meridian Street  
Indianapolis, IN 46204 (317) 633-4040

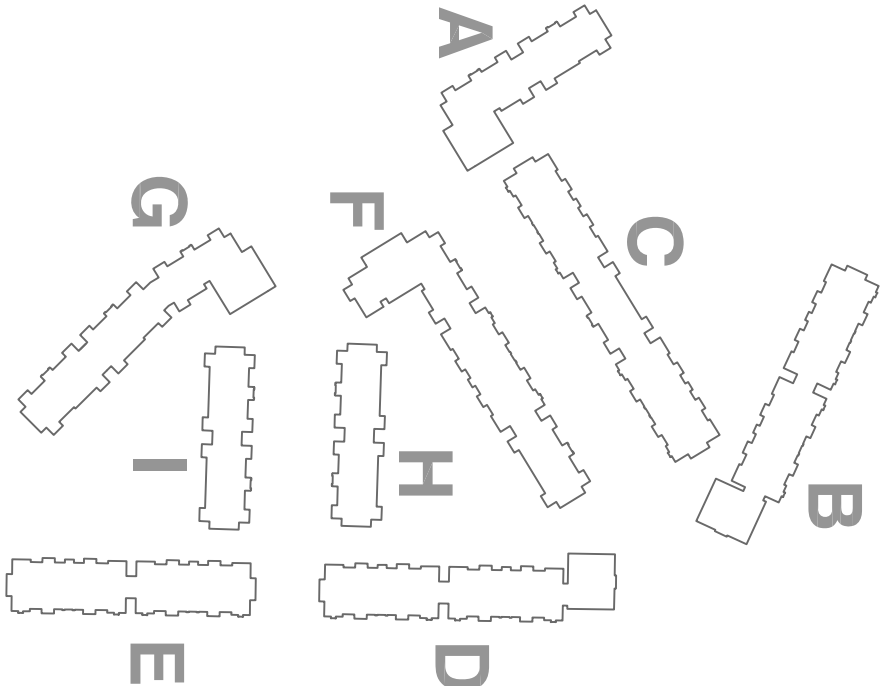
Structural / Civil Engineer:

Fink Roberts & Petrie, Inc.  
3307 West 98th Street  
Indianapolis, IN 46268  
(317) 597-4500

Mechanical / Electrical / Plumbing / Fire Protection

CRS ENGINEERING, INC.

3001 N. Meridian Street  
Indianapolis, IN 46222  
(206) 323-2373



## CONSTRUCTION SET

### BUILDING PACKAGE

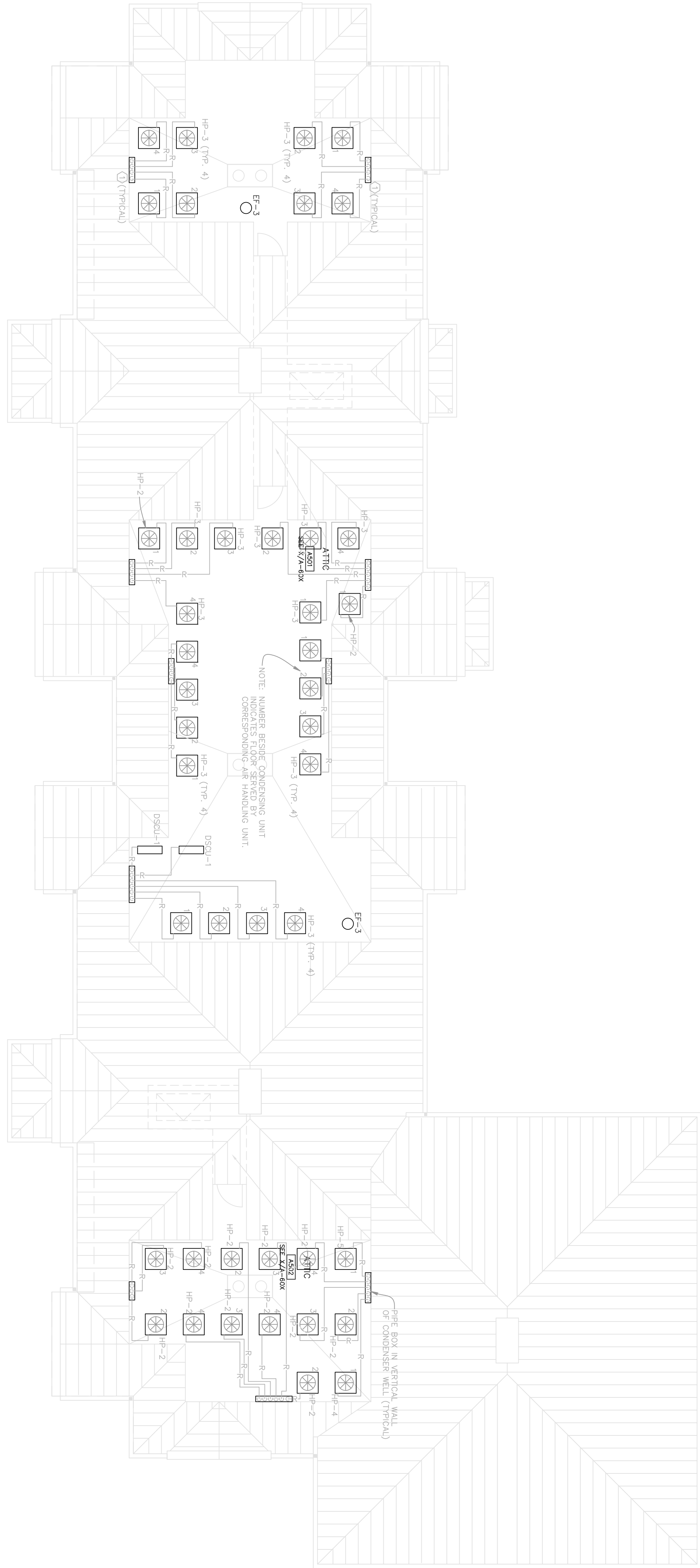
DRAWN BY	NH
CHECKED BY	OC
APPROVED BY	RSB
REVISIONS	
ARCHITECTS	
DATE	11/1/2022



GRAPHIC NOTE: THIS ARCHITECTURAL AND ENGINEERING DRAWING IS FOR INFORMATION AND NOT FOR CONSTRUCTION. NO CONSTRUCTION SHALL BE PERMITTED WITHOUT THE WRITTEN CONSENT OF RATIO ARCHITECTS, INC.

SHEET TITLE  
ROOF PLAN  
BUILDING "A"

PROJECT NO. 01031000  
SHEET NUMBER M-503A

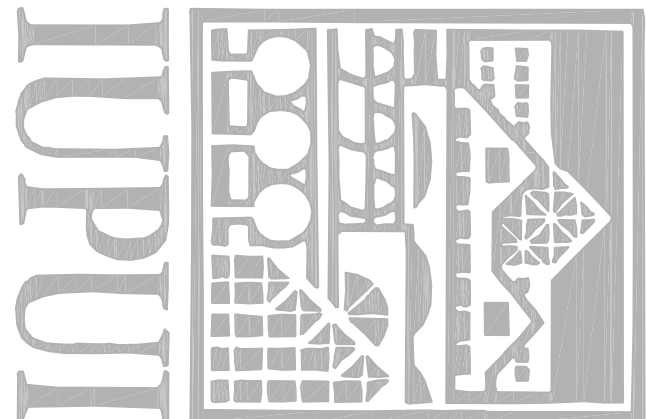


BUILDING A – ROOF PLAN  
MECHANICAL  
0 2 4 6 8 16  
SCALE 1/8" = 1'-0"

GRAPHIC NOTE:  
ROUTE REFRIGERANT LINES AS SHOWN FROM HEAT PUMP TO THE BOX OF ADVANCED SHEET METAL CULLS AND SEAL ALL REFRIGERANT LINE INTO ATTIC SPACE AND TURN DOWN IN MECHANICAL ROOM WALLS AS SHOWN.







INDIANA UNIVERSITY  
PURDUE UNIVERSITY  
INDIANAPOLIS CAMPUS

STUDENT HOUSING  
IU# 20005182

Development Consultant:

CAPSTONE DEVELOPMENT CORP.

331 OHNE PARK DRIVE

INDIANAPOLIS, IN 46222

(203) 414-6400

Architect / Landscape Architect:

RATIO ARCHITECTS, INC.

Suite 100, Schneider Building

Indianapolis, IN 46204 (317) 633-4040

Structural / Civil Engineer:

Fink Roberts & Petrie, Inc.

3307 West 98th Street

Indianapolis, IN 46268

(317) 574-2400

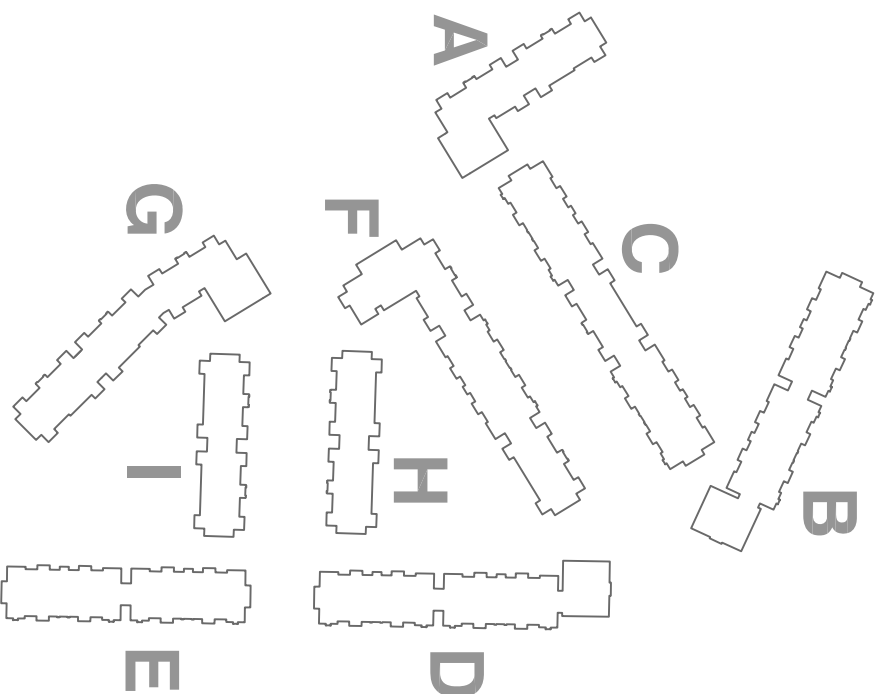
Mechanical / Electrical / Plumbing / Fire Protection

CRS ENGINEERING, INC.

3604 10th Ave. S. Suite 100

Indianapolis, IN 46202

(203) 323-2373



## CONSTRUCTION SET

### BUILDING PACKAGE

DRAWN BY

NH

CHECKED BY

OC

APPROVED BY

RSB



OVERSEEN NOTES: THIS ARCHITECTURAL AND ENGINEERING DRAWING IS FOR INFORMATION AND NOT FOR CONSTRUCTION. NO PART OF THIS DRAWING OR ANY PART THEREOF SHALL BE REPRODUCED OR TRANSMITTED IN ANY FORM OR BY ANY MEANS, ELECTRONIC OR MECHANICAL, WITHOUT PERMISSION IN WRITING FROM RATIO ARCHITECTS, INC.

DATE: 11/1/2022

PROJECT NO.

070301000

SHEET NUMBER

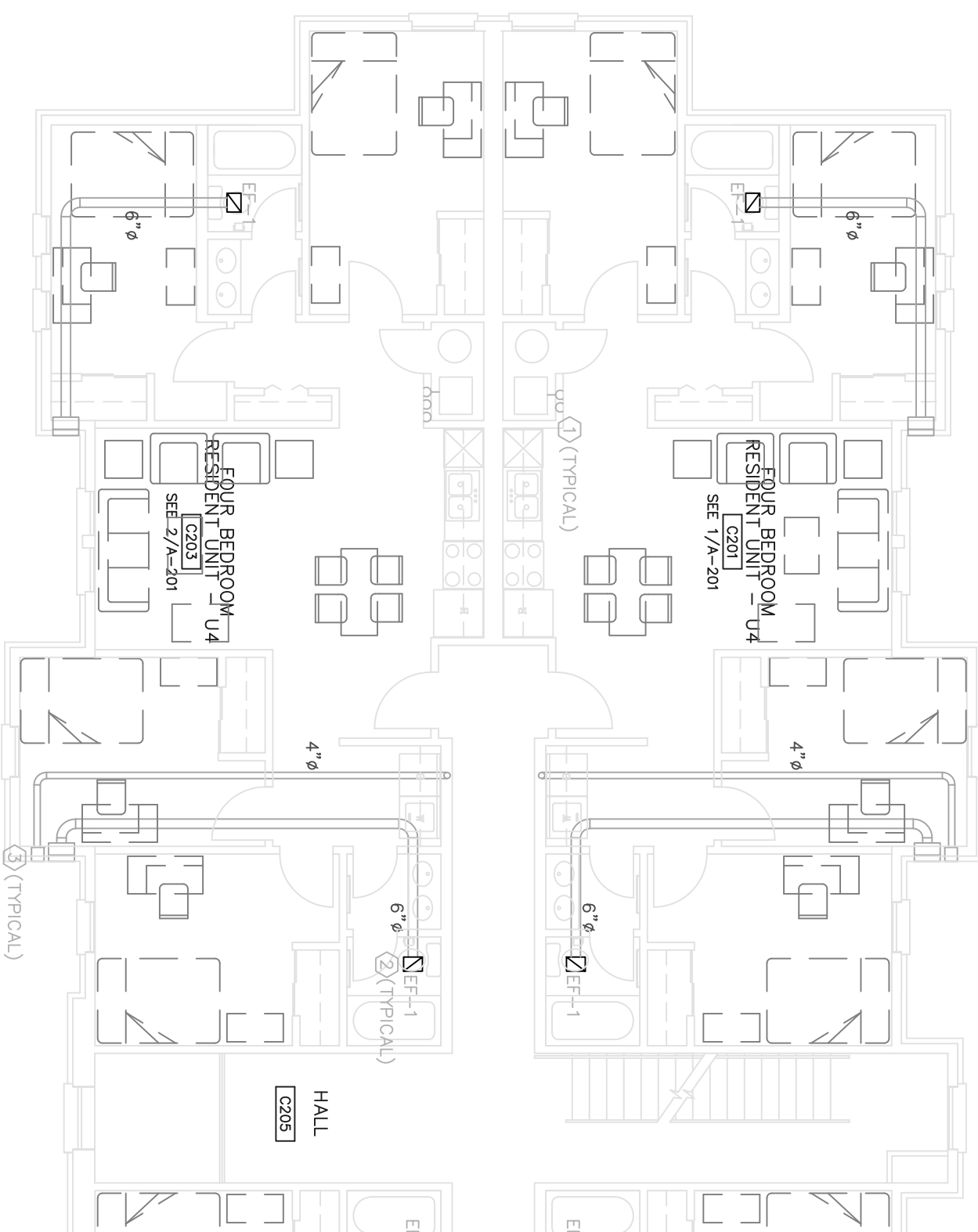
M-502C

DATE

11/1/2022

SECOND FLOOR PLAN

BUILDING "C"



### BUILDING C – SECOND FLOOR

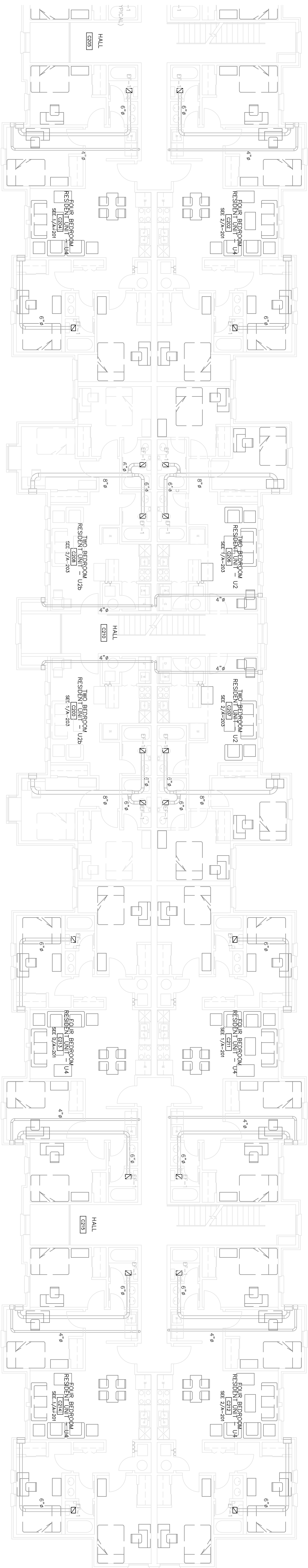
BASE SHEET

0 2 4 6 8 16

SCALE: 1/8" = 1'-0"



NORTH

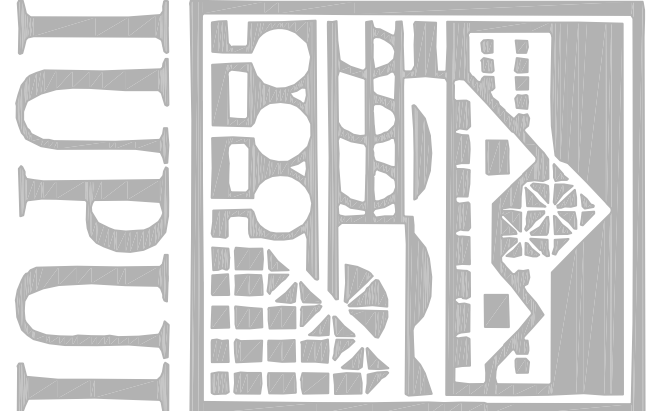


#### DRAWING NOTES:

- ① SERVICENT LINE SET, ROUTE AS SHOWN FROM AND IN MECHANICAL CLOSET TO OUTDOOR UNIT MOUNTED ON ROOF.
- ② EXHAUST FAN IS CEILING MOUNTED, ROUTE EXHAUST DUCT AS SHOWN TO EXTERIOR WALL. TERMINATE AT EXTERIOR WALL WITH A 1/8" x 7 3/4" BRICK VENT (BRICK VENT TO BE MATCH BR-100 OR EQUAL).
- ③ PROVIDE DRYER VENT WALL CAP, BRICK 6x2 OR EQUAL.

#### GENERAL NOTES:

- ① SPACE ABOVE CEILING IS LIMITED. CAREFUL COORDINATION WITH LIGHTING, ELECTRICAL, PLUMBING, STRUCTURAL, AND ARCHITECTURAL. PROVIDE EXHAUST FAN AND DUCT LOCATIONS WITH ARCHITECT'S SELECTED CEILING PLAN.
- ② COORDINATE AIR DUCT LOCATIONS WITH ARCHITECT'S SELECTED CEILING PLAN.
- ③ PROVIDE NECESSARY OFFSETS IN PLUMB, ELECTRICAL, CONDUIT, AND DUCTWORK AS REQUIRED TO ACCOMMODATE NEW WORK. COORDINATE WITH ARCHITECT FOR ANY CONFLICTS. PROVIDE NECESSARY OFFSETS IN PLUMB, ELECTRICAL, CONDUIT, AND DUCTWORK AS REQUIRED TO ACCOMMODATE NEW WORK. COORDINATE WITH ARCHITECT FOR ANY CONFLICTS. PROVIDE NECESSARY OFFSETS IN PLUMB, ELECTRICAL, CONDUIT, AND DUCTWORK AS REQUIRED TO ACCOMMODATE NEW WORK. COORDINATE WITH ARCHITECT FOR ANY CONFLICTS.
- ④ SHALL ALLOW FOR ANY CONFLICTS. PROVIDE NECESSARY OFFSETS IN PLUMB, ELECTRICAL, CONDUIT, AND DUCTWORK AS REQUIRED TO ACCOMMODATE NEW WORK. COORDINATE WITH ARCHITECT FOR ANY CONFLICTS.
- ⑤ MOUNT THERMOSTATS 4'-0" ABOVE FINISHED FLOOR UNLESS NOTED OTHERWISE. COORDINATE EXACT LOCATION WITH ARCHITECT.
- ⑥ DRAWINGS ARE DIAGRAMATIC AND DO NOT SHOW ALL DETAILS OR CHANGES IN DUCTWORK ELEVATIONS NECESSARY FOR COMPLETE INSTALLATION.
- ⑦ ALL BRICK VENTS SHALL BE UNPAVED FIRST THROUGH FOURTH FLOORS.



INDIANA UNIVERSITY  
PURDUE UNIVERSITY  
INDIANAPOLIS CAMPUS

STUDENT HOUSING  
IU# 20005182

Development Consultant:

CAPSTONE DEVELOPMENT CORP.

331 OHNE PARK DRIVE  
BIRMINGHAM, AL 35223

(205) 414-6400

Architect / Landscape Architect:

RATIO ARCHITECTS, INC.

Suite 100, Schneider Building  
1000 North College Avenue  
Indianapolis, IN 46204 (317) 633-4040

Structural / Civil Engineer:

Fink Roberts & Petrie, Inc.

3307 West 90th Street  
Indianapolis, IN 46268

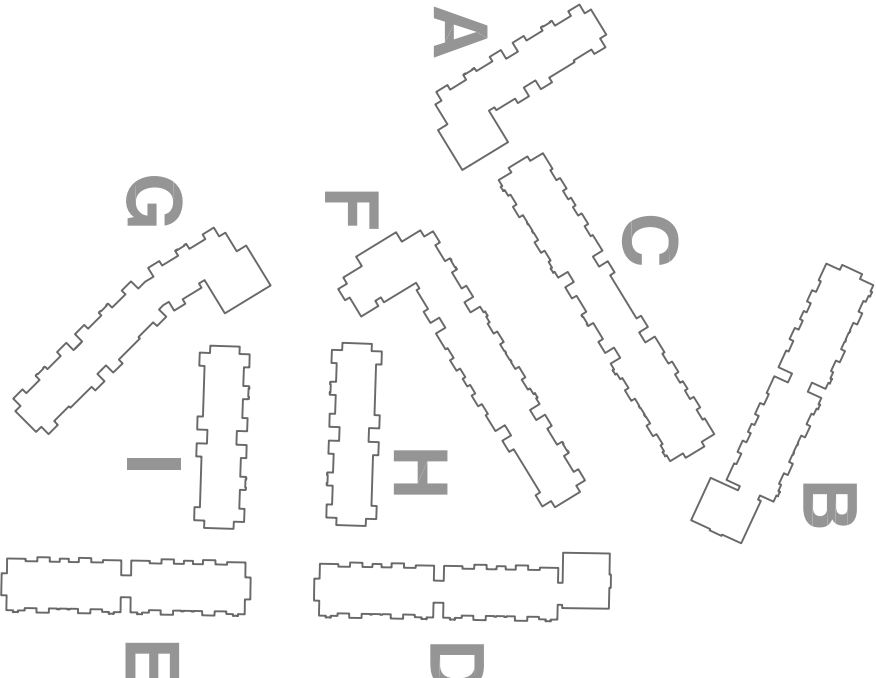
(317) 574-4400

Mechanical / Electrical / Plumbing / Fire Protection

CRS ENGINEERING, INC.

3800 East 84th Street  
Bloomington, IN 47409-3222

(205) 323-2373



CONSTRUCTION  
SET

BUILDING PACKAGE

DRAWN BY

NH

CHECKED BY

CS

APPROVED BY

RSB



CORPORATE NOTE: THE ARCHITECTURAL AND  
ENGINEERING DRAWINGS ARE IN CONFORMANCE AND  
WITH THE BUILDING PACKAGE AND THE DESIGN  
DEVELOPMENT OR DEVELOPMENT MAY BE MADE WITHOUT  
FORWARDING TO THE ARCHITECTS, INC.

OVERSIGHT OF THE ARCHITECTS, INC.

REVISIONS

△	△
△	△
△	△
△	△
△	△
△	△

SHEET TITLE  
THIRD FLOOR PLAN,  
BUILDING "C"

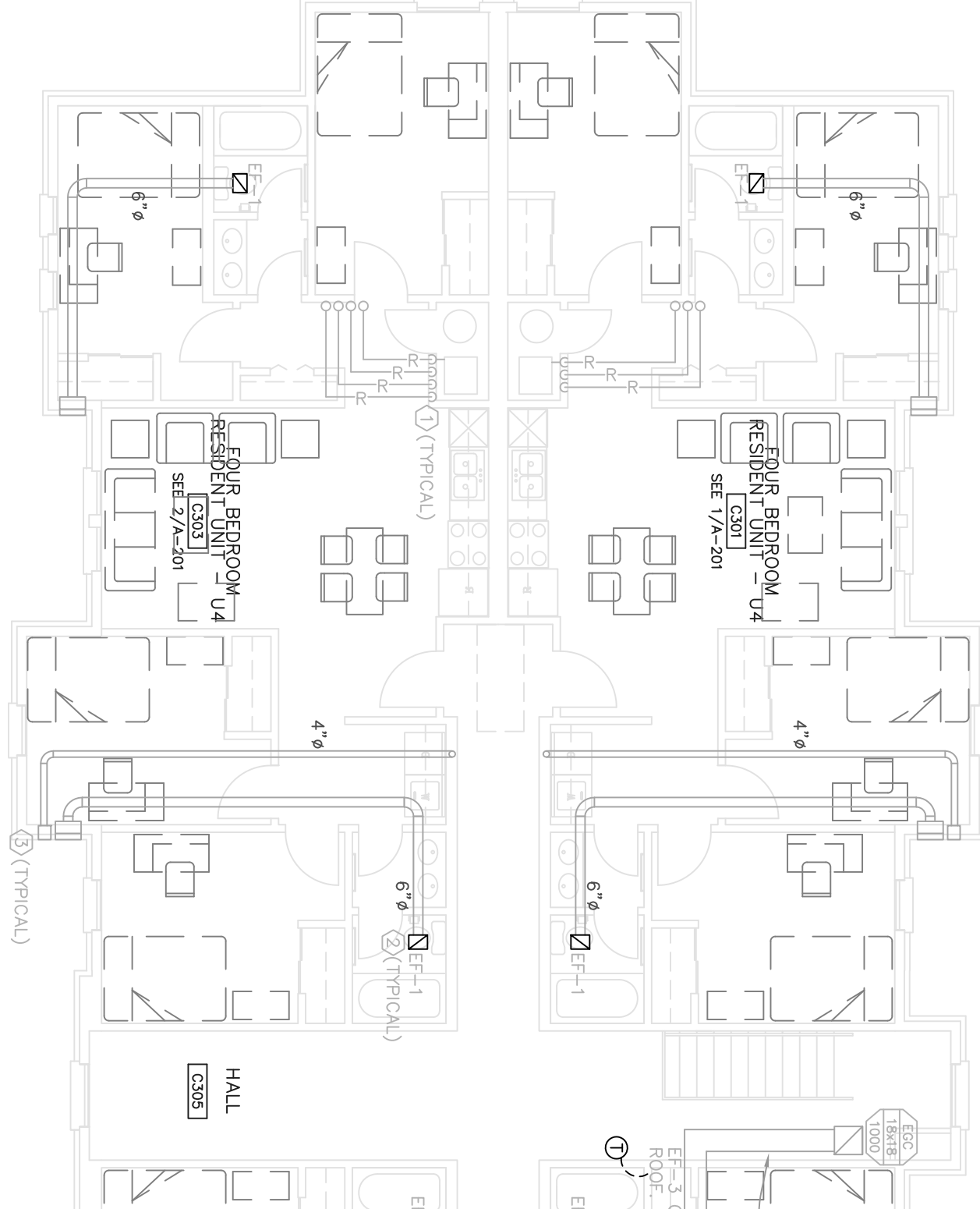
PROJECT NO.

00001000

DATE

11/1/2002

SHEET NUMBER  
M-503C



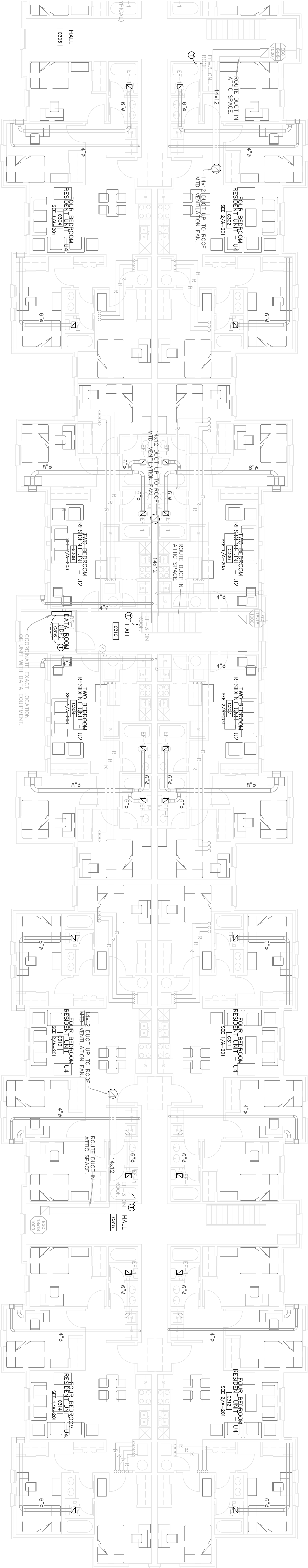
BUILDING C – THIRD FLOOR

BASE SHEET

0 2 4 6 8 16



SCALE: 1/8" = 1'-0"



BUILDING C – THIRD FLOOR

BASE SHEET

0 2 4 6 8 16



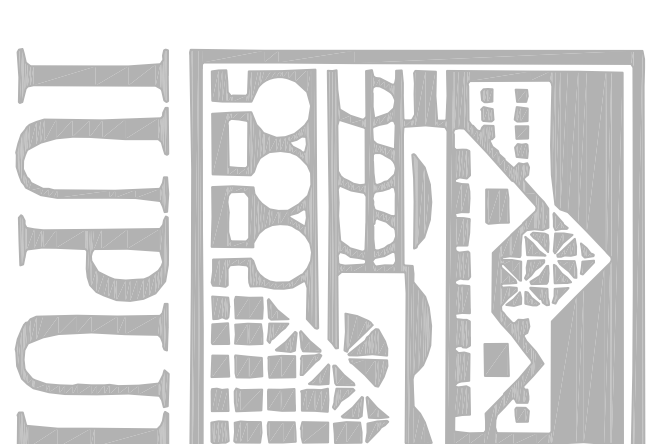
SCALE: 1/8" = 1'-0"

MECHANICAL NOTES:

1. REFRIGERANT LINE SET, ROUTE AS SHOWN FROM AND IN MECHANICAL CLOSET TO OUTDOOR UNIT, MOUNTED ON ROOF. EXISTING ROADS REMAINING AS SHOWN TO EXISTING WALL TERMINATE AT EXTERIOR WALL WITH 8 1/8" x 3/4" BRICK VENT (BRICK VENT TO BE RUSH BY-100 OR EQUAL).
2. PROVIDE DIRECT VENT WALL CAP, BRONZ 642 OR EQUAL.
3. REFRIGERANT LINE SET, ROUTE AS SHOWN FROM MECHANICAL CLOSET TO HUB, BRONZ 642 OR EQUAL.

GENERAL NOTES:

1. SPACE ABOVE CEILING IS LIMITED. CAREFUL COORDINATION WITH MECHANICAL, ELECTRICAL, AND PLUMBING IS CRITICAL TO DUCTWORK INSTALLATION.
2. COORDINATE AIR DEVICE LOCATIONS WITH ARCHITECT'S SELECTED CEILING PLAN.
3. PROVIDE NECESSARY ACCESS IN FINISH ELECTRICAL CONDUIT AND SHALL ALLOW FOR ANY CONFLICTS ENCOUNTERED.
4. DUCTWORK SHALL BE RUN TIGHT TO STRUCTURE, AND CROSSING OVER LIGHTS AND OTHER DUCTS DUE TO TIGHT CLEARANCES.
5. MOUNT THERMOSTATS 4'-0" ABOVE FINISHED FLOOR UNLESS NOTED OTHERWISE. COORDINATE EXACT LOCATION WITH ARCHITECT.
6. DRAWINGS ARE DIMENSIONAL AND DO NOT SHOW ALL DETAILS OR INSTALLATION. DIMENSIONS AND ELEVATIONS NECESSARY FOR COMPLETE INSTALLATION.
7. ALL BRICK VENTS SHALL BE UNFURNISHED FIRST THROUGH FOURTH FLOORS.



INDIANA UNIVERSITY  
PURDUE UNIVERSITY  
INDIANAPOLIS CAMPUS

STUDENT HOUSING  
IU# 20005182

**Development Consultant:**  
**CAPSTONE DEVELOPMENT CORP.**  
431 Office Park Drive  
Birmingham, Alabama 35223  
(205) 414-6400

**Architect / Landscape Architect:**  
**RATIO ARCHITECTS, INC.**  
Suite 100, Schrader Building  
107 South Pennsylvania Street  
Indianapolis, IN 46204 (317) 693-4040

**Structural / Civil Engineer:**  
**Fink Roberts & Petrie, Inc.**  
3307 West 96th Street  
Indianapolis, IN 46268  
(317) 872-8400

**CRS ENGINEERING, INC.**  
3504 7th Avenue, South  
Birmingham, Alabama 35222  
(205) 323-2373

Mechanical / Electrical / Plumbing / Fire Protection

**CRS ENGINEERING, INC.**  
10000 Highway 100, Suite 100  
Bloomington, Minnesota 55425  
(612) 332-2373

# CONSTRUCTION SET

## BUILDING PACKAGE

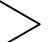

DRAWN BY	
NH	
CHECKED BY	
CG	
APPROVED BY	
RSB	



**RATIO**  
ARCHITECTS

COPYRIGHT NOTICE: THE ARCHITECTURAL AND ENGINEERING DRAWING IS STAY IN CONFERENCE AND SHALL BE USED ONLY PRESENT TO THE AGREEMENT WITH RATIO ARCHITECTS, INC. NO OTHER USE, REPRODUCTION OR DISTRIBUTION MAY BE MADE WITHOUT PRIOR WRITTEN CONSENT OF RATIO ARCHITECTS, INC. ALL COMMON LAW RIGHTS OF COPYRIGHT AND OTHERWISE ARE HEREBY SPECIFICALLY RESERVED.

## REVISIONS

SHEET TITLE  
ROOF PLAN  
BUILDING "C"

PROJECT NO. 0031000	SHEET NUMBER
DATE 11/1/2002	<b>M-504C</b>

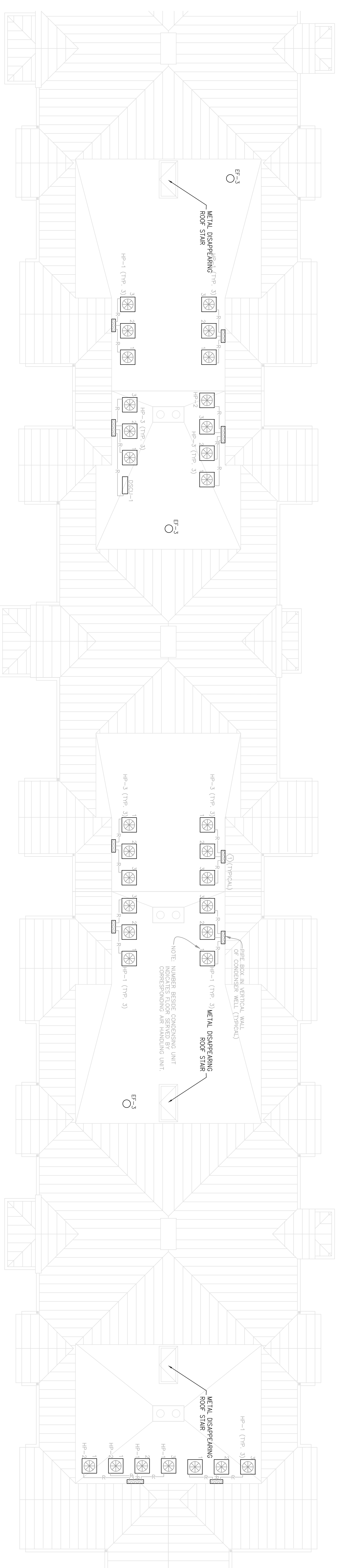
**BUILDING C – ROOF PLAN**

MECHANICAL

0 2 4 6 8 16

NORTH

SCALE: 1/8" = 1'-0"



**BUILDING C – ROOF PLAN**

MECHANICAL

0 2 4 6 8 16

SCALE: 1/8" = 1'-0"

NORTH

**DRAINING NOTES:**

① ROUTE REFRIGERANT LINES AS SHOWN FROM HEAT PUMP TO PIPE BOX MOUNTED IN CONDENSER WELL WALL. PIPE BOX SHALL BE CONSTRUCTED OF GALVANIZED STEEL PLATE, GULF END SEAL, TIE RODS, FINGERBOLT, RIVETED LEATHER, DOWN NUT AND WASHER. TURN DOWN PIPE BOX INTO ATTIC SPACE AND TURN DOWN IN MECHANICAL ROOM. WALLS AS SHOWN.