



INDIANA UNIVERSITY
CAPITAL PROJECTS

Addendum #4

Project: Jacobs School of Music - Musical Arts Center Theatrical Systems –
Stage Floor, Stage Automation, Fly Automation - Design and Installation

Date: April 30, 2026

This Addendum, issued prior to bidding, alters, amends, corrects, or clarifies the Request for Proposal Documents to the extent stated herein and does thereby become a part of the Request for Proposal Documents, and will become part of the Contract Documents of the successful bidder. Acknowledge receipt of this Addendum in the space provided on the Bid Form. Failure to do so may subject the Bidder to disqualification.

ITEMS INCLUDED IN THIS ADDENDUM

Additional Mandatory Pre-Bid Meeting

A second mandatory pre-bid meeting was held on Friday, April 17, 2026, at 10:00 AM. Please see the attached list of attendees.

Questions and Answers

1. Do the SL and SR wagons need power/data onboard? If so, please describe the general locations?

Yes, we would like power and data located in at least two locations along the off-stage edge of the SL wagon and one each on the off-stage edges of the two SR wagons.

2. Would the university like a backup console in addition to the main?

A backup console for automation is not a required part of the package but would be helpful to see provided as an optional addition. At present the wagons are operated from a single console.

3. If additional MEP work is required to connect components into the university power supply will the university contract and manage separately those vendors?

Yes, the university is seeking for the demo of equipment for removal, and then the design, sourcing/manufacturing, delivery, and install of the new equipment as a turn-

key system. Submissions should note where the proposed systems stop and where university connection is expected and required by university vendors.

4. Can the lighting/dimmer upgrade proposal documents be shared with those submitting for the stage floor/wagon/turntable/automation project.

Yes, both requests for proposals are currently viewable on the university's website. Parties considering each project (or both) are able to view the total documents related to this building. Moreover, after projects are award, the university will coordinate the timelines, labor, and delivery of the new systems as we recognize this is a single theatrical space with systems that need to live as technical neighbors.

5. What is the desired hoisting capacity of the Counter Weight Loading assist winches? Is there a desired actuation (foot pedal vs hand-held)?

4000 lbs would be optimal, variable speed, with hand-held actuation.

6. What are the specs of the current upstage auto battens?

Batten Length: 66' 4"

Pipe: 2" schedule 40

Pick Points: 5 spaced 13'6" +/- apart with 7' batten overhang at the ends

Lift lines: 1/4" Aircraft Cable

Travel Speed: 6 feet at 10 seconds or .6 feet a second.

Control panel is push button up and down, mounted to the DSL wall. Unable to access the motors and cannot find specs on them but from their size I am assuming they are 5 HP 208 volt connected to a right-angle worm gear reducer that turns a cable drum roughly 1' to 1' 6" Dia.

The motors have a single line attached to the drum that feeds to a clew that connects to the 5 1/4" lift lines. The track that the clew runs along is mounted along the ceiling in line with the batten and the lift lines double back at the opposite end of the system.

Images follow.



Figure 1. US Auto Batten Controls



Figure 2. US Auto Batten Drives

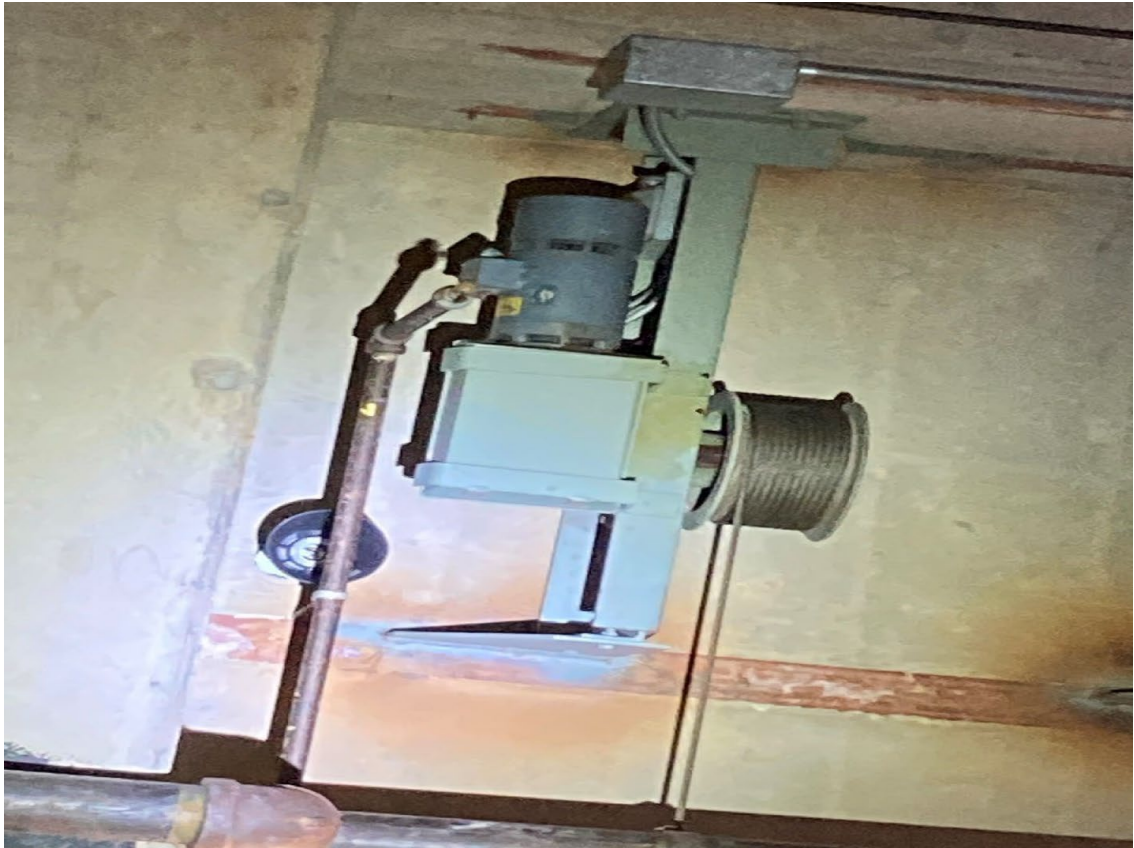


Figure 3 Single US Auto Batten Drive

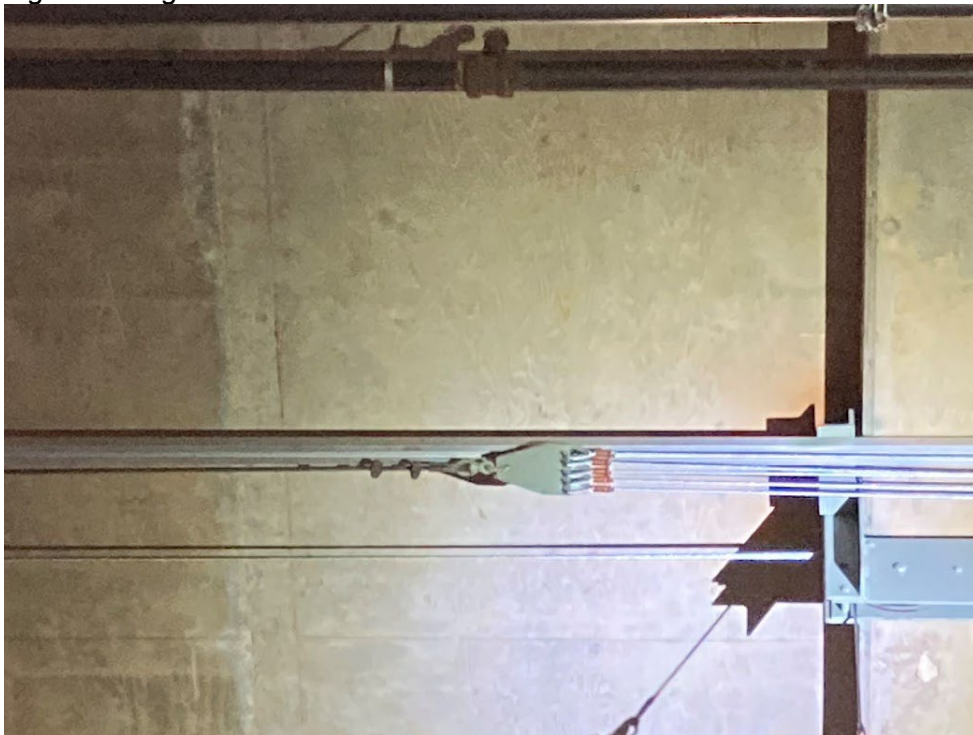


Figure 4 Auto Batten Clew and T-track

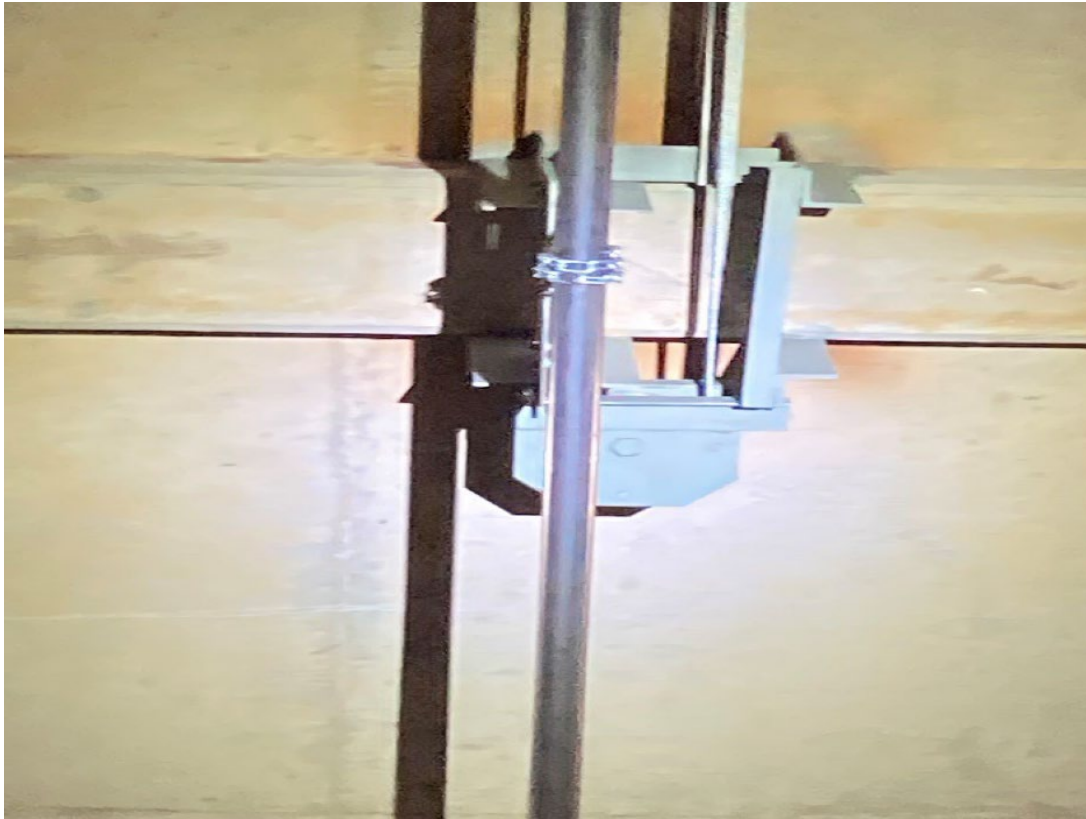


Figure 5 Auto Batten Mule Block

7. What are the specs of the current hand-crank winches at stage level?

Winch type: Thern product

Lift rating: 4000 pounds empty drum and 2000 pounds full

Number and Location:

US:5

SL:4

SR:4

Batten length: 44'+/-

Pipe Size: 2" sched 40

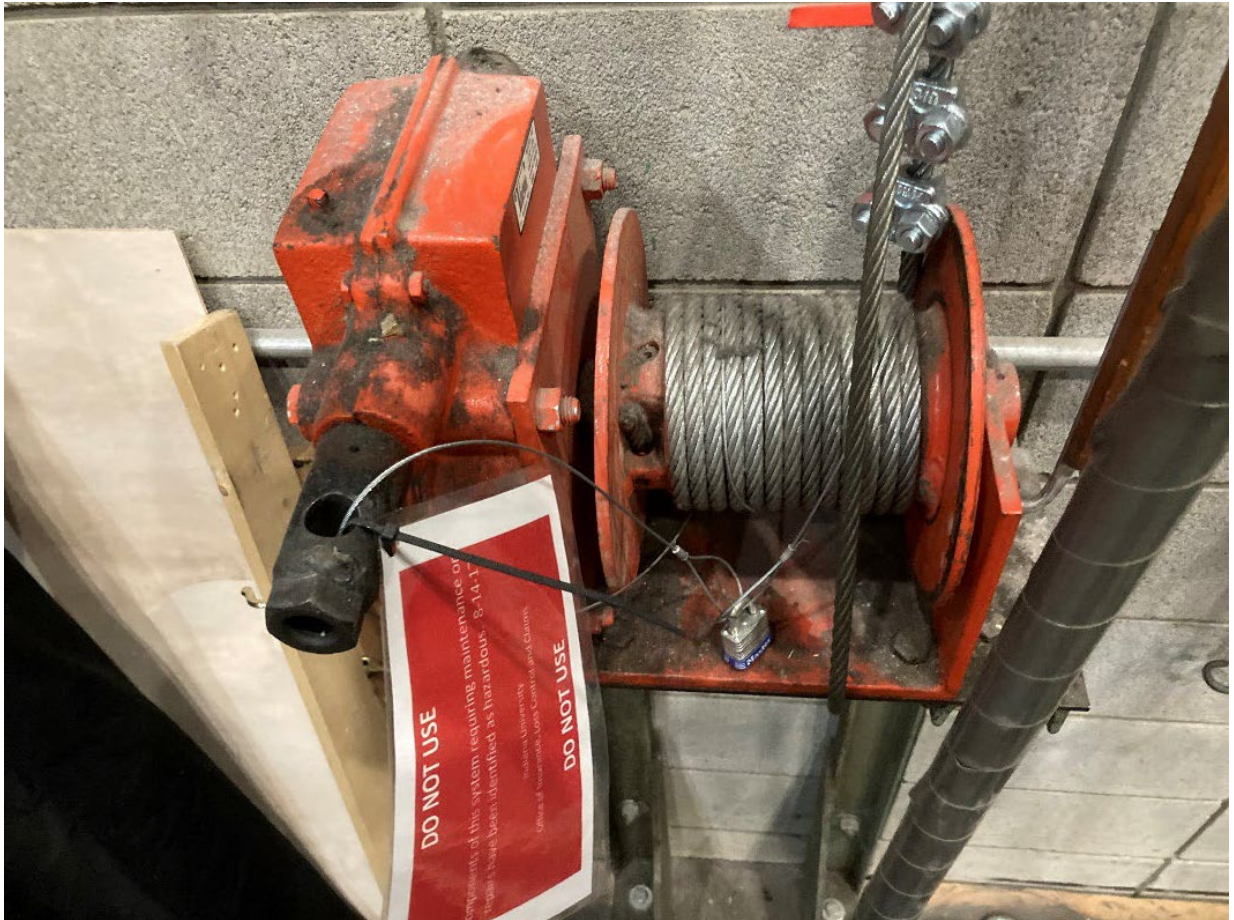
Pick Points: 4

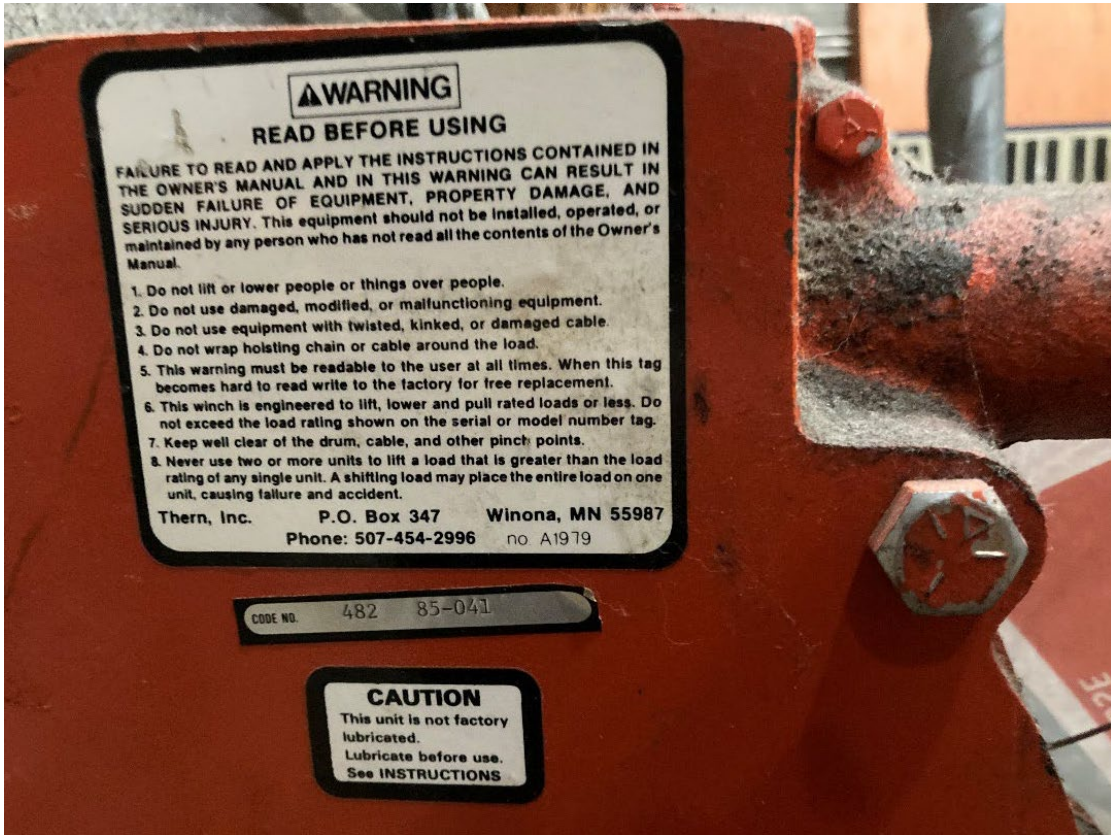
Lift Lines: 1/4" Aircraft Cable

Winch Line: 3/8" Aircraft Cable

All are double purchased. Clew winches have a single 3/8" cable running to a snatch block that travels along T tracks mounted to the wall. 1/4" aircraft cable runs through the blocks and to the battens. The track is mounted roughly 11' above the winch.

Each stage space (US, SL, SR) has one system mulled around an obstacle. The mulling only happens to the single 3/8" cable running between the winch drum to clew.





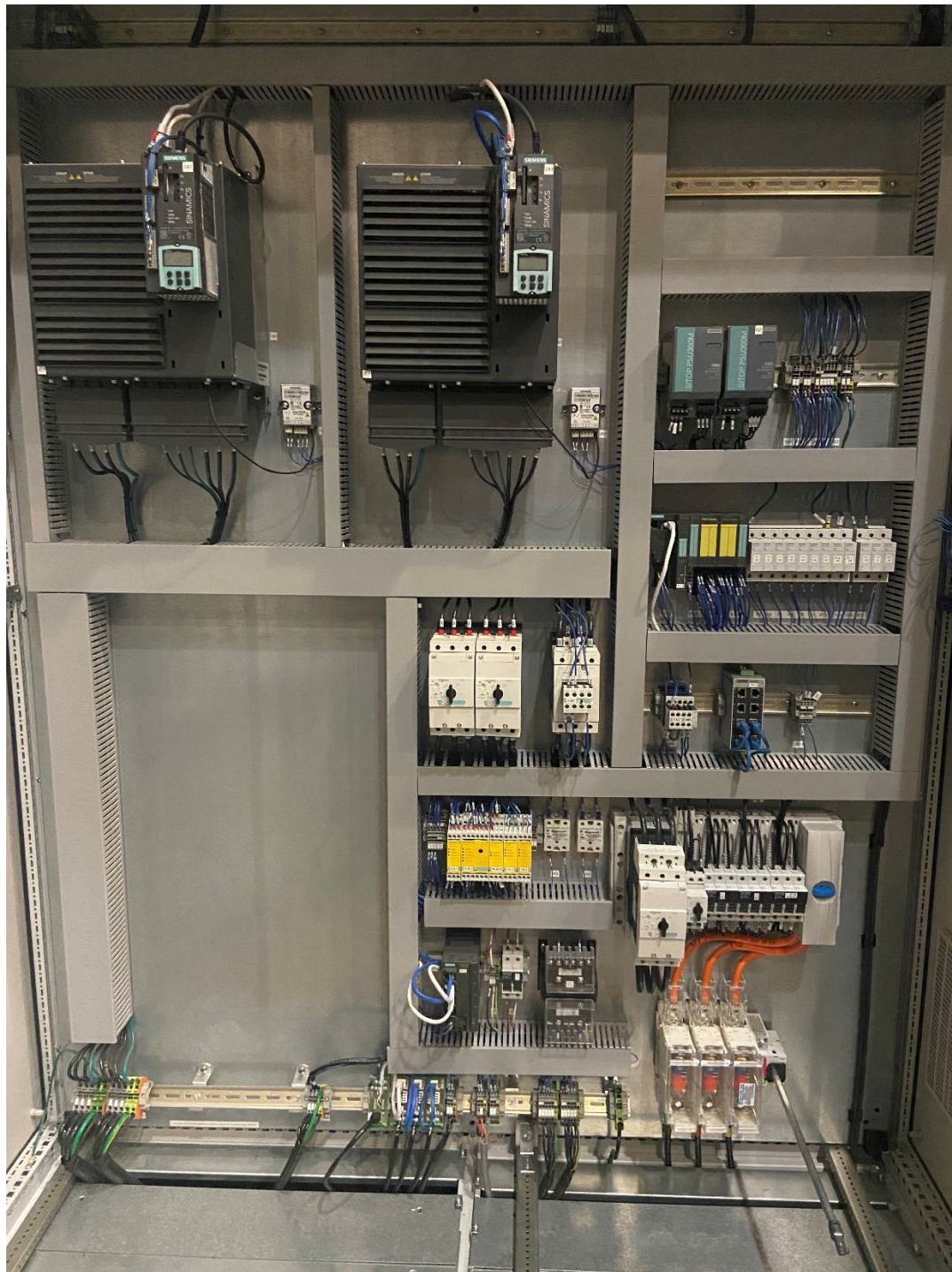
CODE NO. 482 85-041

CAUTION
This unit is not factory lubricated.
Lubricate before use.
See INSTRUCTIONS



8. Where do the drives for the deck automation live?

The drives are located in control cabinets on the far walls, in the corresponding areas for the three wagons. So, the SL wagon is located on the offstage wall down stage left, SR wagon is located on the offstage wall down stage right, and the upstage wagon is located on the farthest upstage wall.





9. Where is deck automation controlled from currently?

They are controlled from a console, it is currently on a shop built wheeled desk. The desk has a limited range of movement (possible 8') due to cable length and the current location of the plug in for the Illusionist console (data, and power). It is still current; it is a Stage Technologies Illusionist.



10. Do you wish to maintain the current deck automation control location.

We want the ability to program from the house and then move the station backstage, for the versatility and ease for both programming and running of shows.

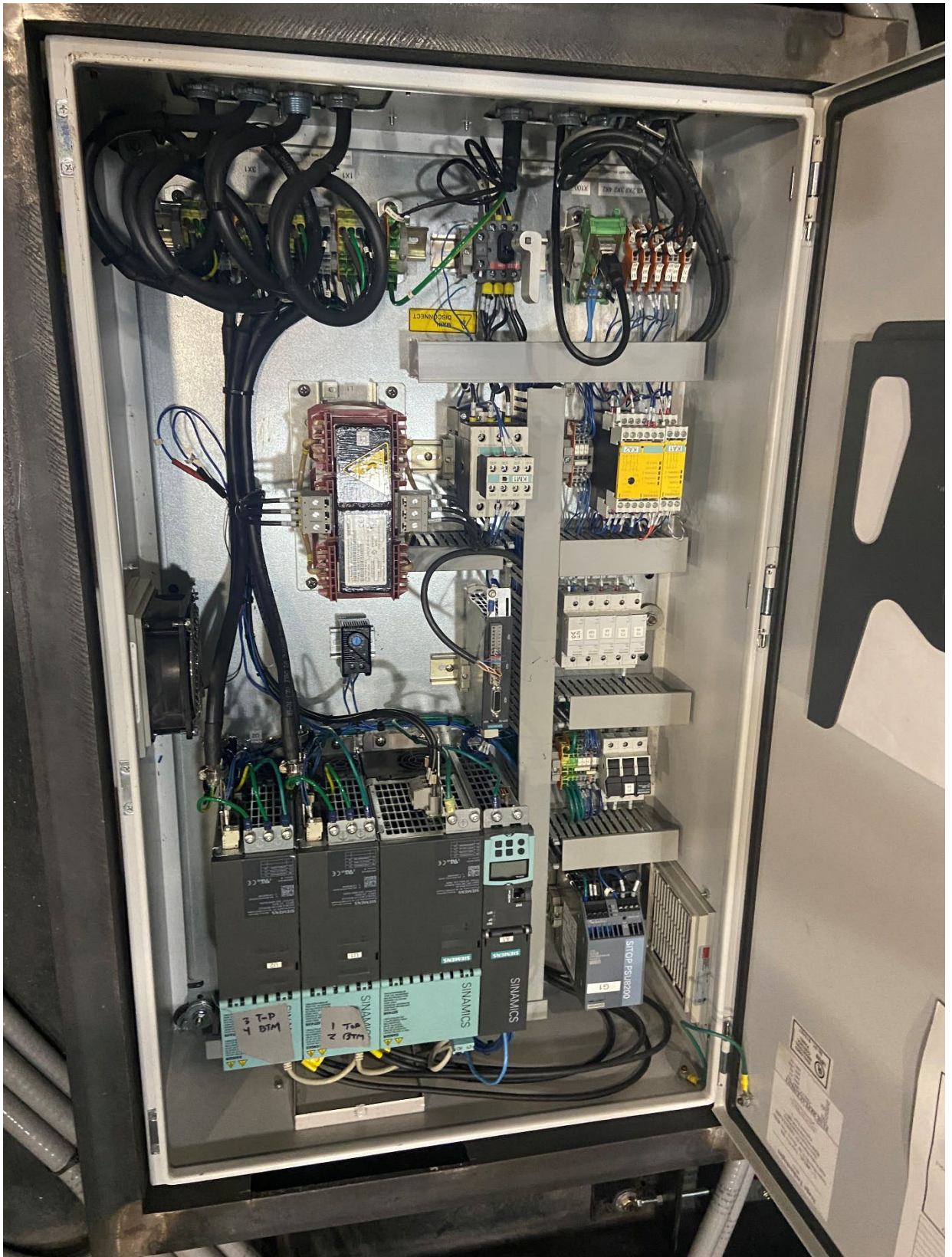
11. Does the 48' turntable also have servo motors?

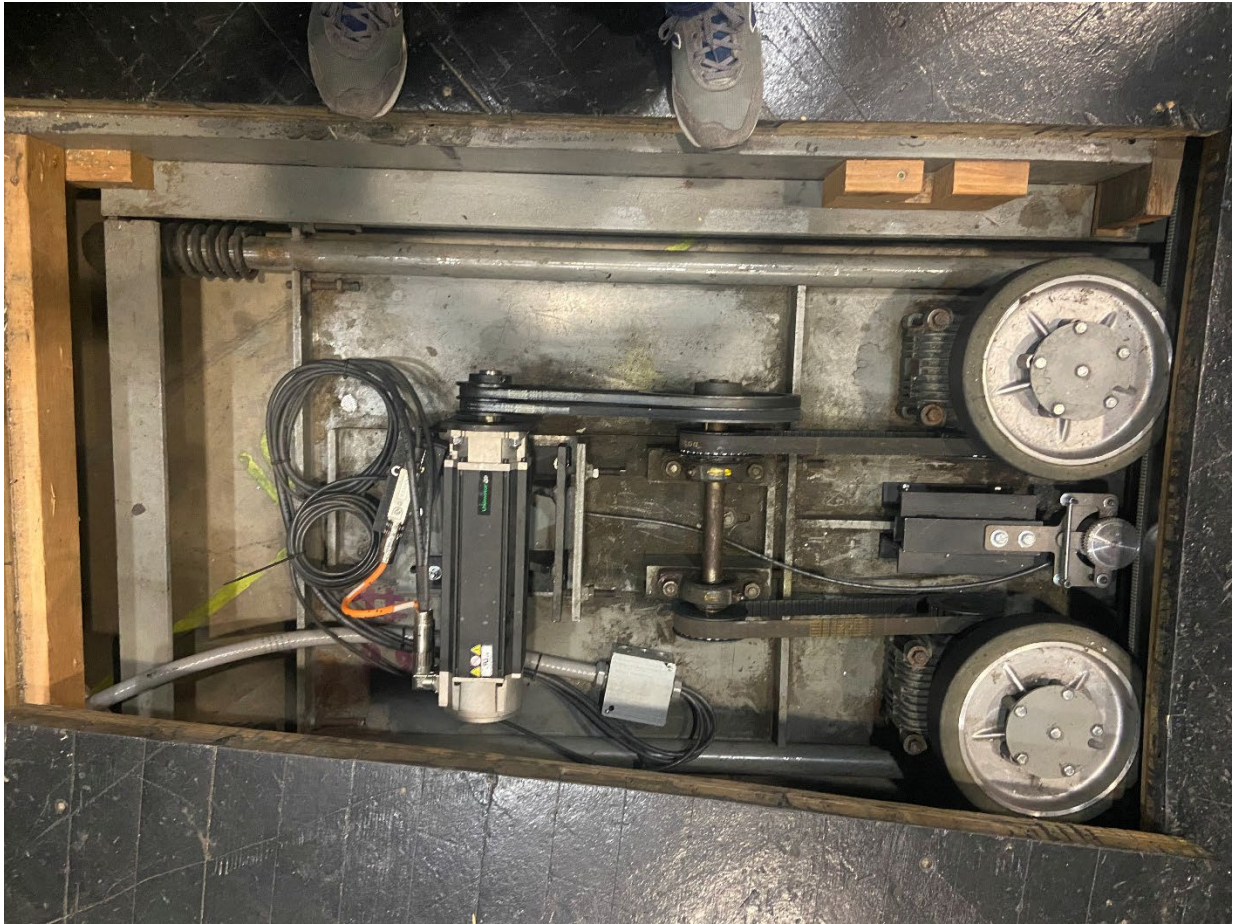
Yes.

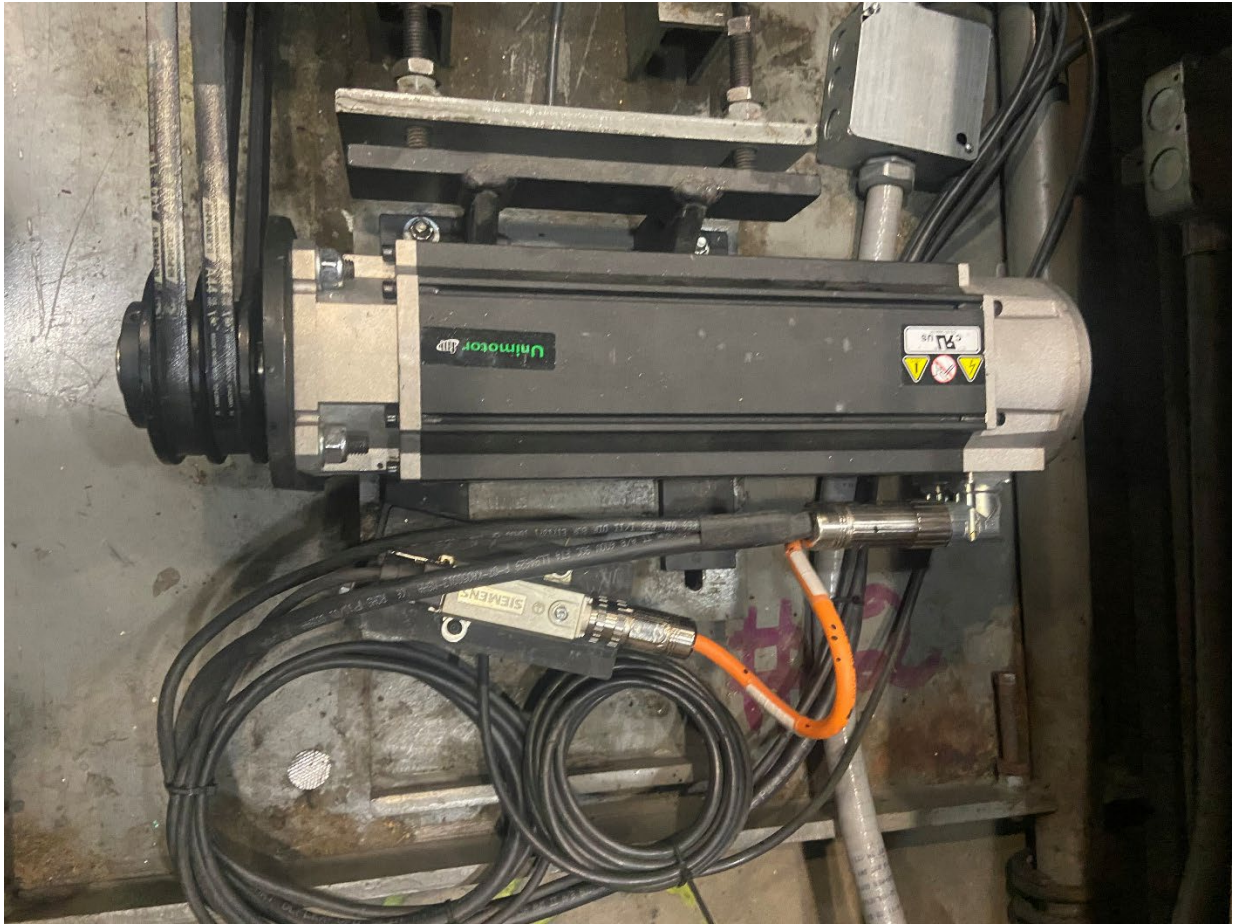
12. Do you have any pictures of the current turntable drive?

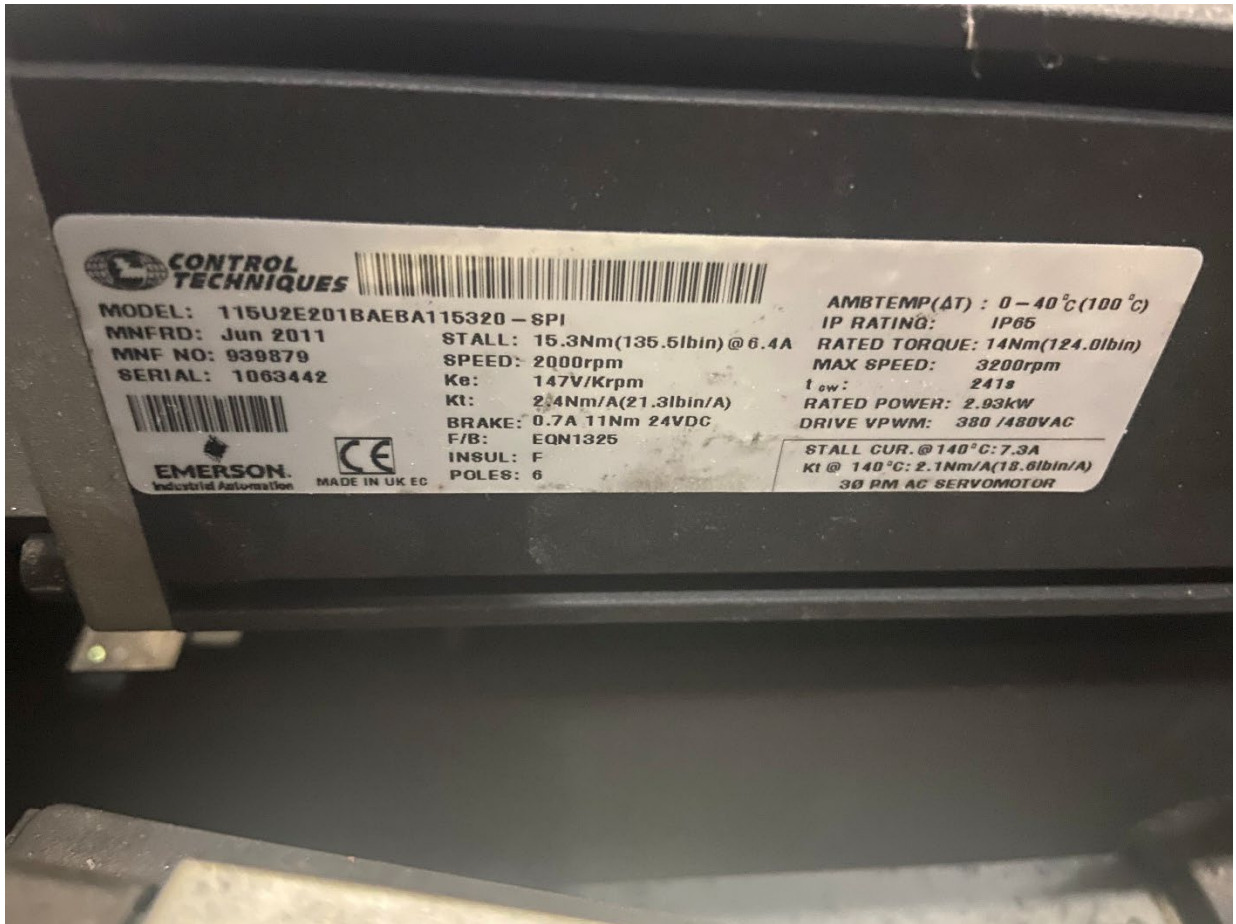
Yes. See below.











Subcontractors

Each bid shall include a complete list of proposed subcontractors and suppliers.

Attachment

List of attendees for April 17, 2026, mandatory pre-bid meeting

END OF ADDENDUM 4

Service Building 2901 E. Discovery Parkway Bloomington, IN 47408 (812) 855-5032 fax (812) 855-9387 <https://cpf.iu.edu>
Health Sciences 1050 Wishard Blvd., Suite 4100 Indianapolis, IN 46202 (317) 274-8396 fax (317) 274-8827

Jacobs School of Music - Musical Arts Center Theatrical Systems – Stage Floor, Stage Automation, Fly
Automation - Design and Installation

MAC - 2ND PRE BID

V. BOB RICHARDSON	LU	labrich@iu.edu 812-855-1492
RYAN STRAUER	STRAUSER CONST.	rstrauer@strauusercci.com
Victor Villalta	APPLIED ENG	VVILLALTA@APPLIED-E-S.COM 937-866-5062
DAN McLAUGHLIN	SCENIC SOLUTION	DAN@SCENICSOLUTIONS.COM
MICHAEL WETZEL	STRAUSER CONST.	MWETZEL@STRAUSERCCI.COM
BRIAN ROHDE	TAIT	brian.rohde@taittowers.com
ALEX MOON	FORCE TECH	AGMOON@FORCE.TECH
CHRIS POORE	FORCE TECH	CPOORE@FORCE.TECH
Ryan Miller	Browning Day	
BRIAN O'NEIL	FIP	brian.o'neil@fip.com
TRENTON RAMSEY	CASSADY	trent.ramsey@cassadyelectric.com
TREVOR CHITWOOD	CASSADY	trevor.chitwood@cassadyelectric.com
Chris Kelly		
Tanner Watson	Electric Plus	t.watson@electricplus.com
Aaron Seelig	Indianapolis Stage	aaron@indystage.com
Matt Hollstegge	VLS	mhollstegge@vls.com
Zach Barras	Wenger Corp	zach.barras@wengercorp.com
Brad Wollen	TERSTEP Co.	BRAD@TERSTEP.COM
Ron Kepler	DRS	RonKepler2@gmail.com
Pete Vea	Wenger	pete.vea@wengercorp.com
Peterson Wray	IV JSM	
Steve Wilton	" "	